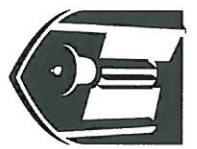
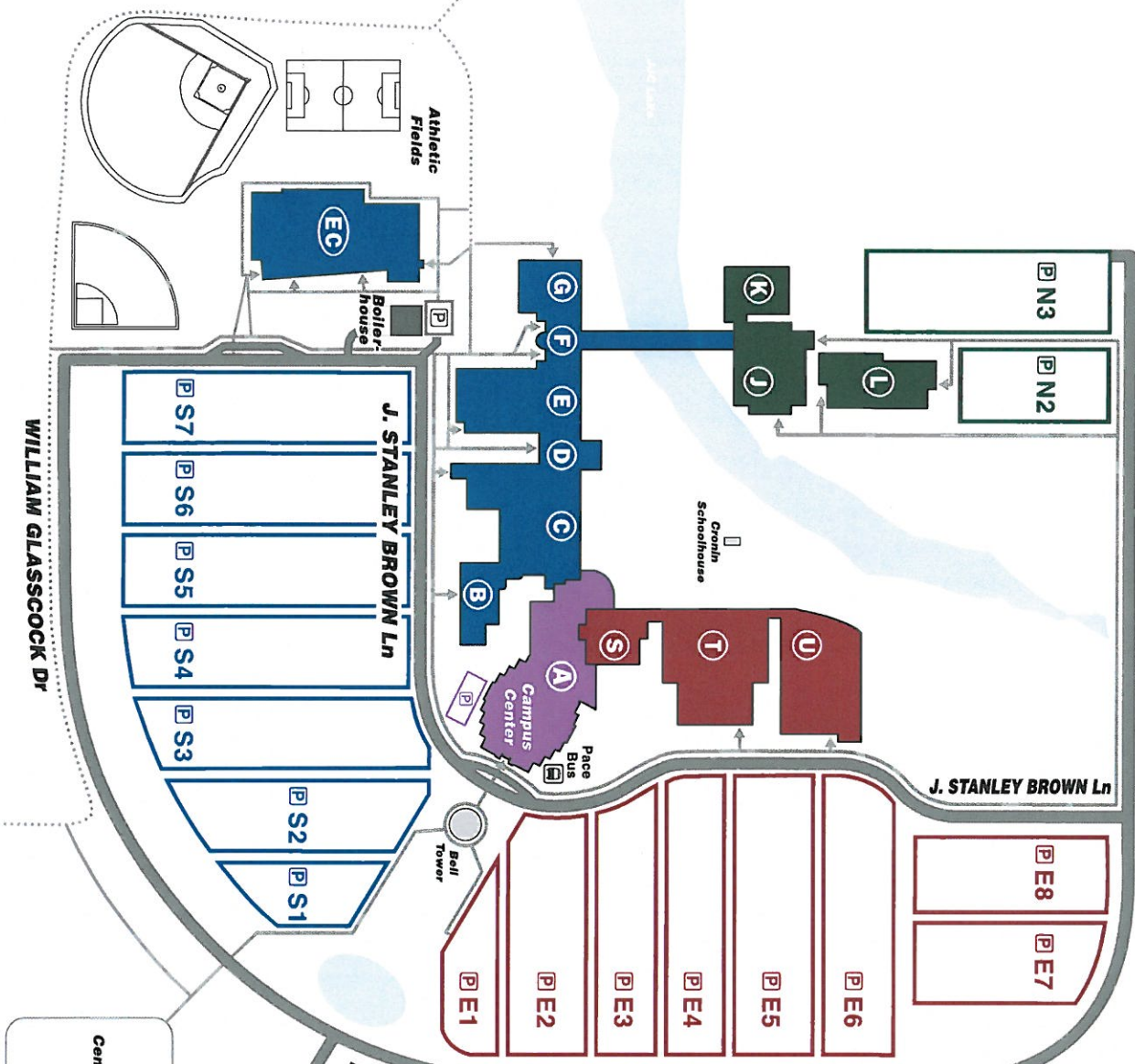


Rock Run Trail



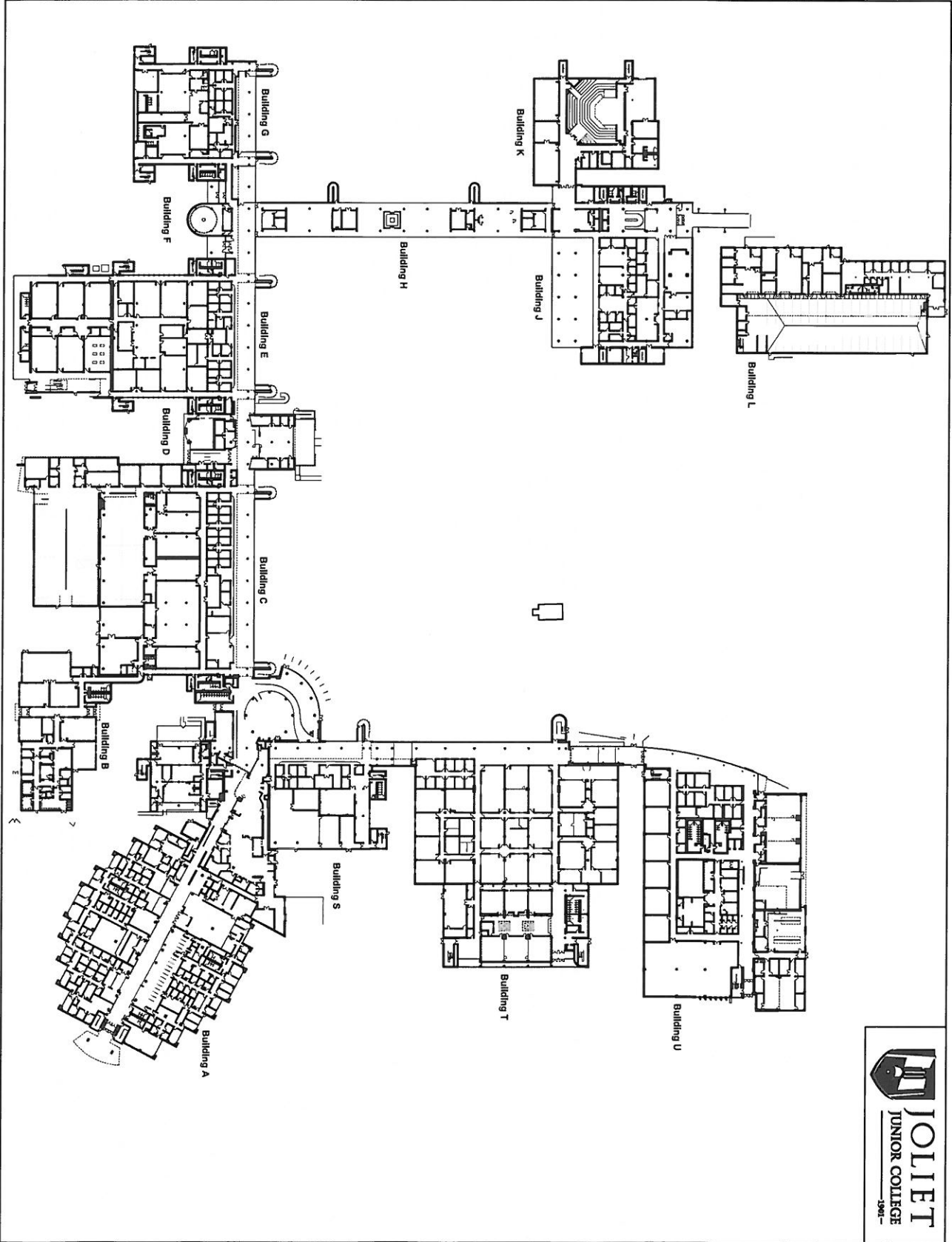
JOLIET
 JUNIOR COLLEGE
 1901-

W. Jefferson St.
 52 55



HOUBOLT ROAD

HOUBOLT ROAD

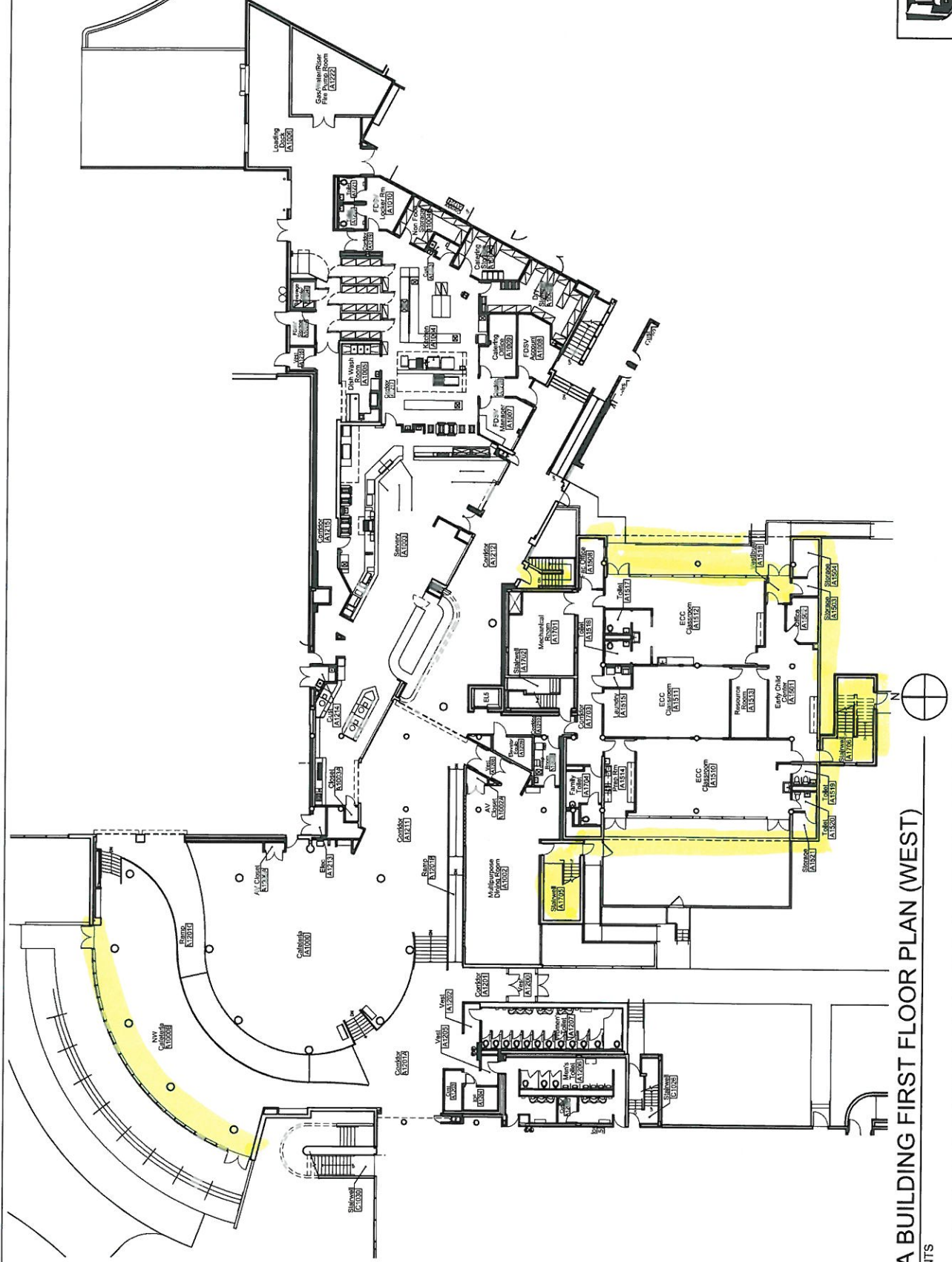


A-Building (Main Campus): The Contractor will wash:

- a. All exterior windows (campus center and child care)
- b. All interior windows (student street side only) 2nd & 3rd floors, including horizontal protruding accent glazing and 2nd floor crossover bridge domes (top only)
- c. All interior vestibule glass (campus center and child care)
- d. Cafeteria interior curved windows and doors
- e. All interior stairwell glass



A BUILDING FIRST FLOOR PLAN (EAST)
 NTS



A BUILDING FIRST FLOOR PLAN (WEST)
NTS

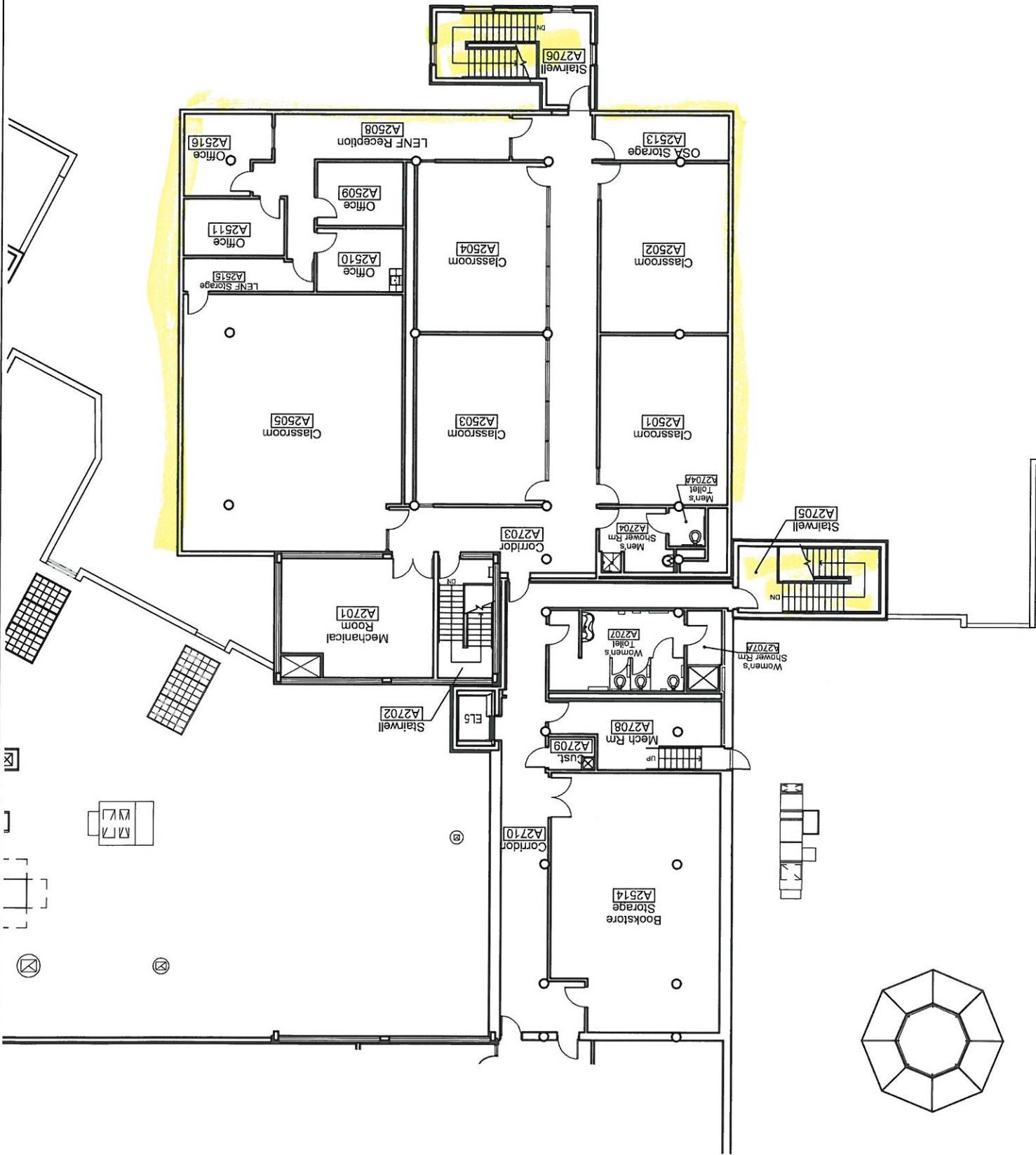


A BUILDING THIRD FLOOR PLAN

NTS

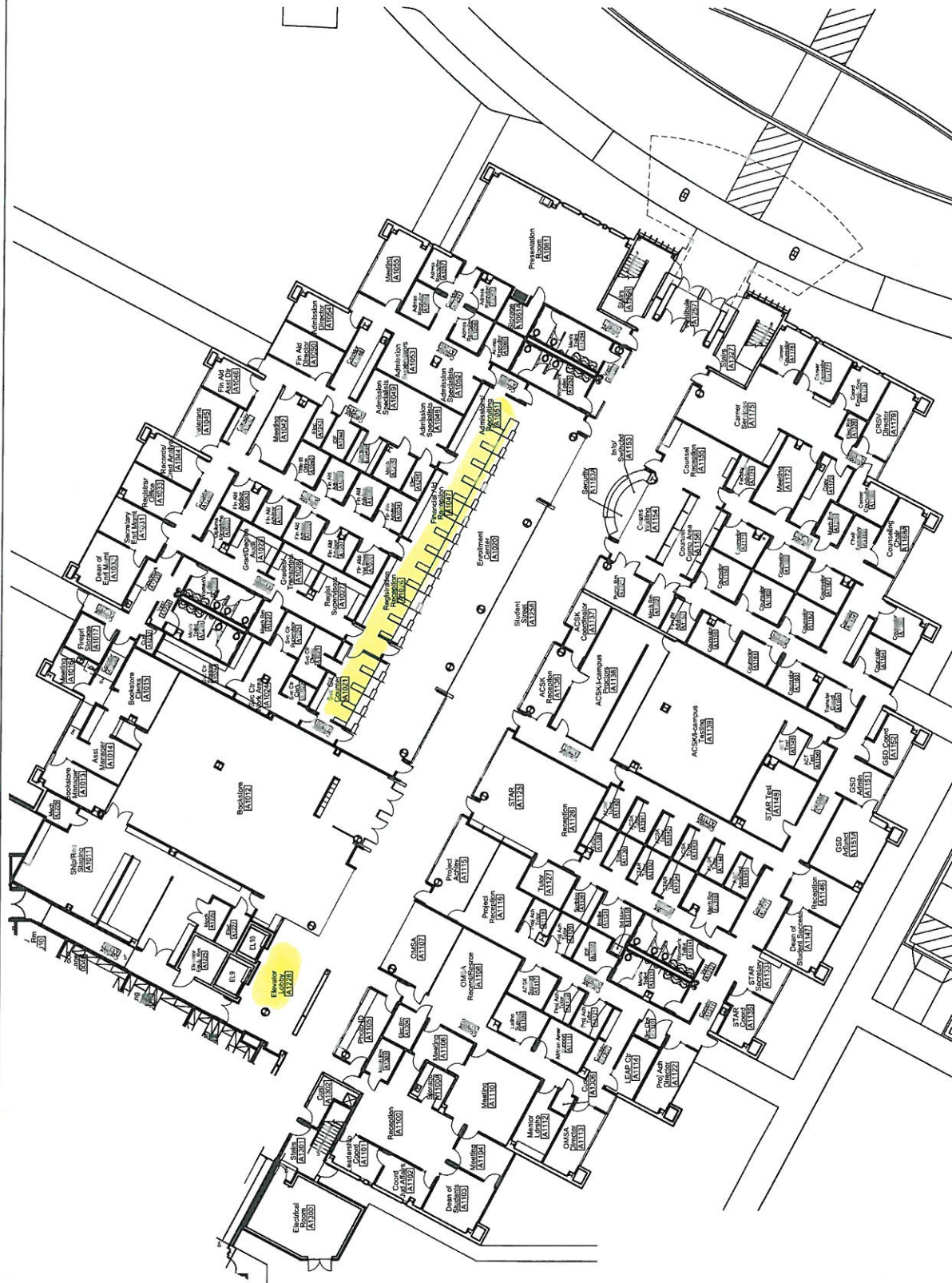


A BUILDING SECOND FLOOR PLAN (WEST)

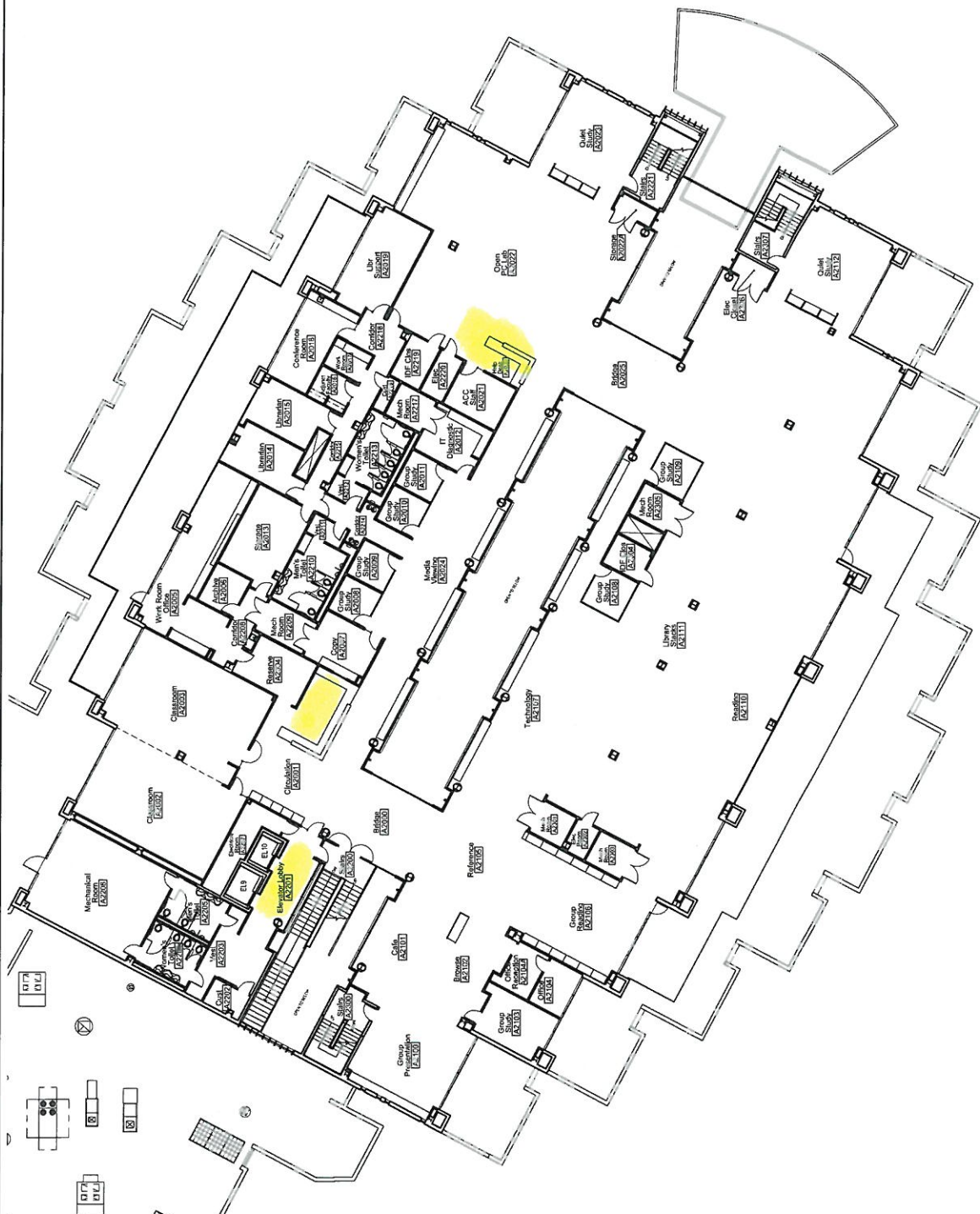


A-Building (Main Campus): The Contractor will wash:

- a. All acoustical glass ceiling tiles (Enrollment Center, Library and Elevator lobbies 1st and 2nd floors)



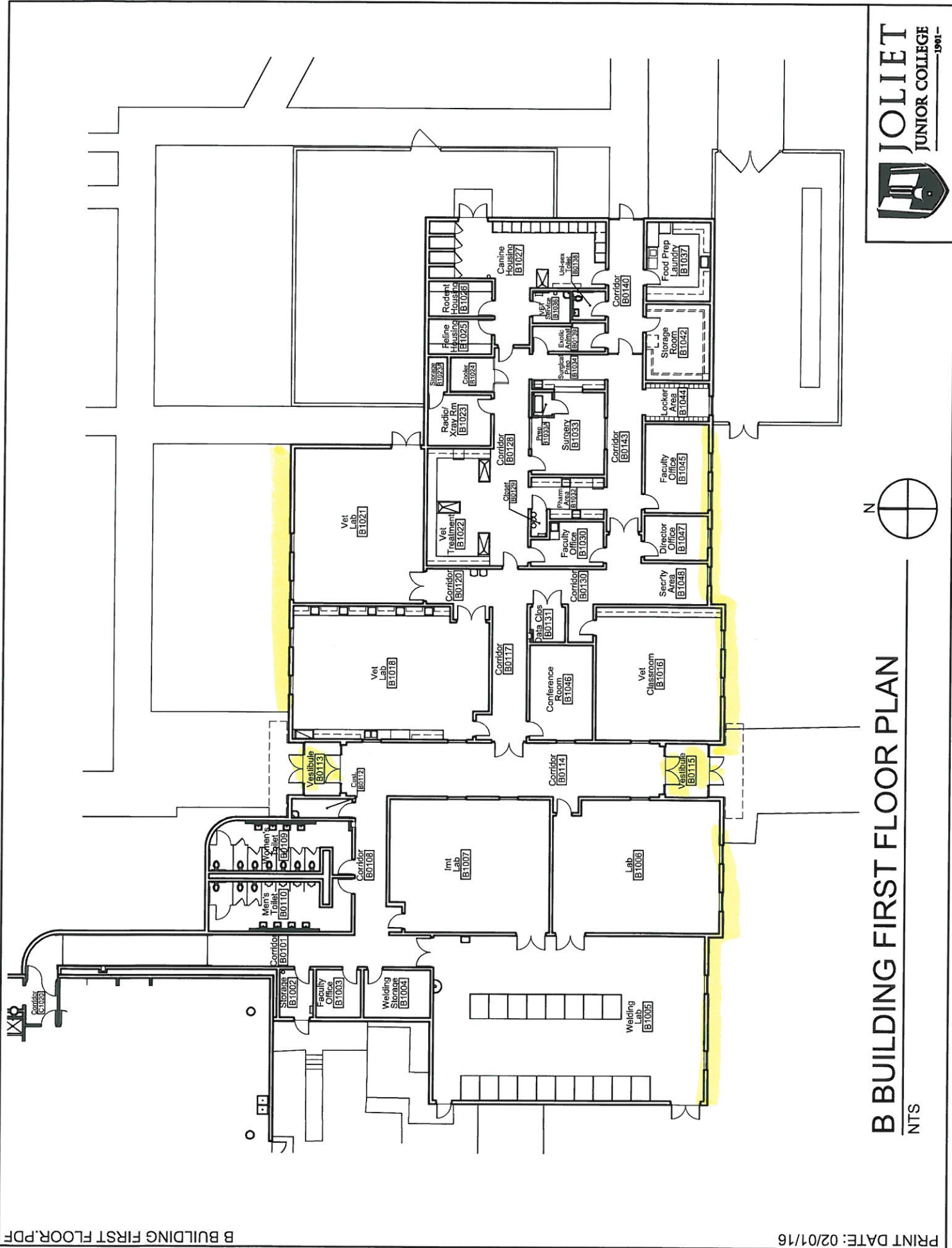
A BUILDING FIRST FLOOR PLAN (EAST)
NTS



A BUILDING SECOND FLOOR PLAN (EAST)
N/T/S

B-Building (Main Campus): The Contractor will wash:

- a. All exterior windows
- b. All interior vestibule glass



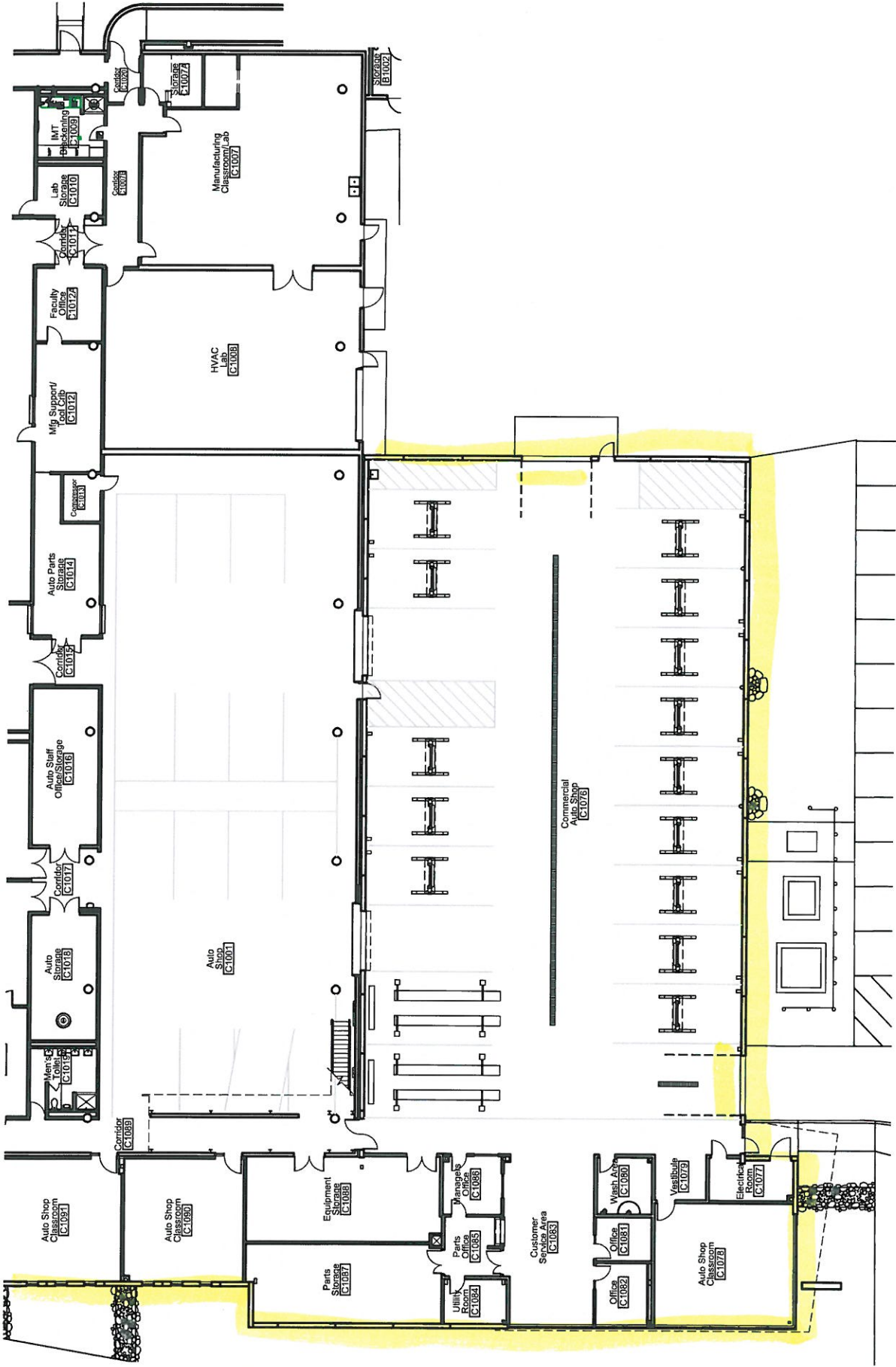
B BUILDING FIRST FLOOR PLAN

NTS



C-Building (Main Campus): The Contractor will wash:

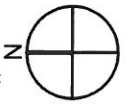
- a. All exterior windows
- b. EXCLUDING exterior concourse windows
- c. Interior and exterior of overhead garage doors



C BUILDING FIRST FLOOR PLAN (SOUTH)

NTS

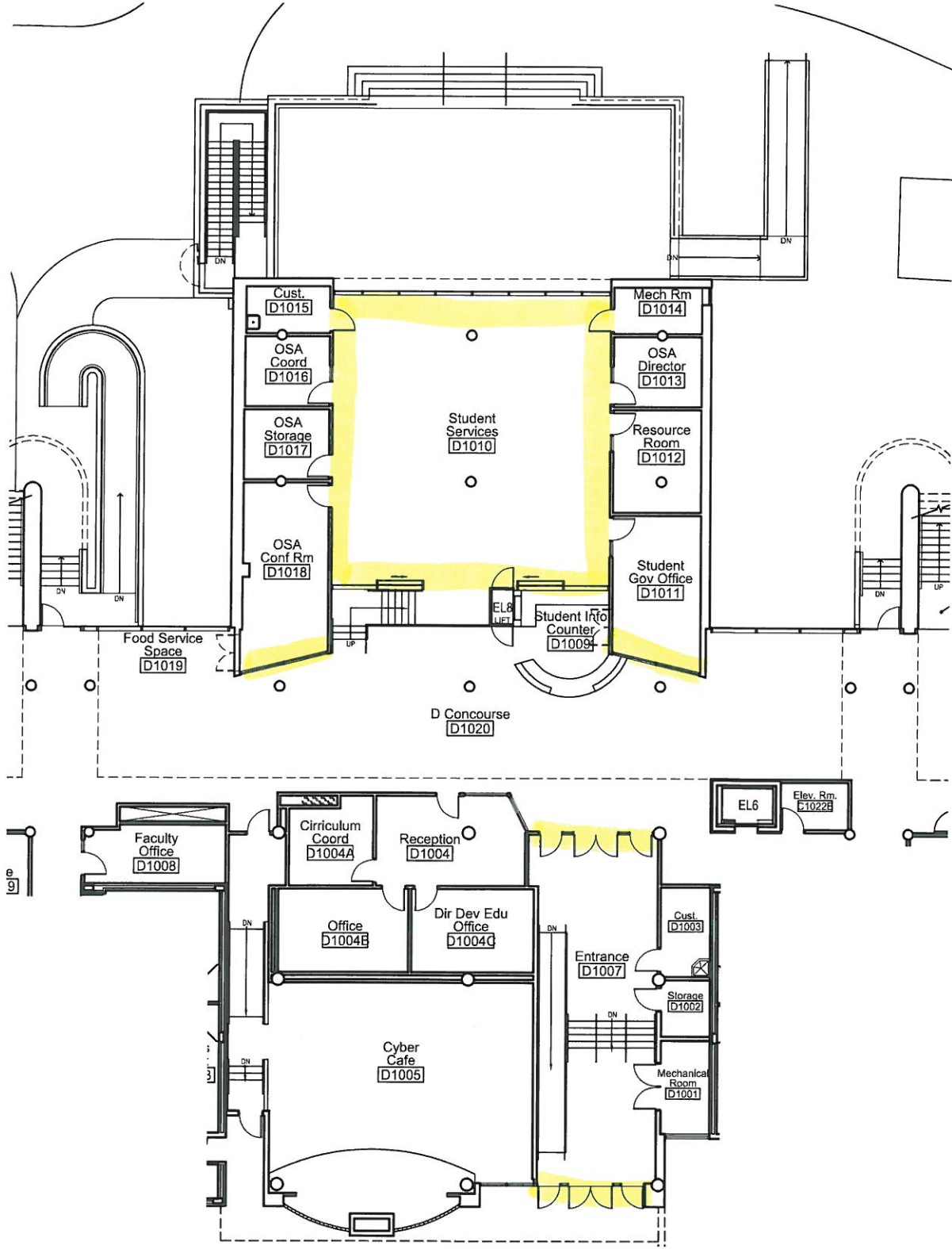




C BUILDING FIRST FLOOR PLAN (NORTH)

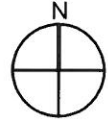
NTS

- D-Building (Main Campus): The Contractor will wash:
- a. All interior windows to office D-1010
 - b. Exterior and interior exit doors and vestibule



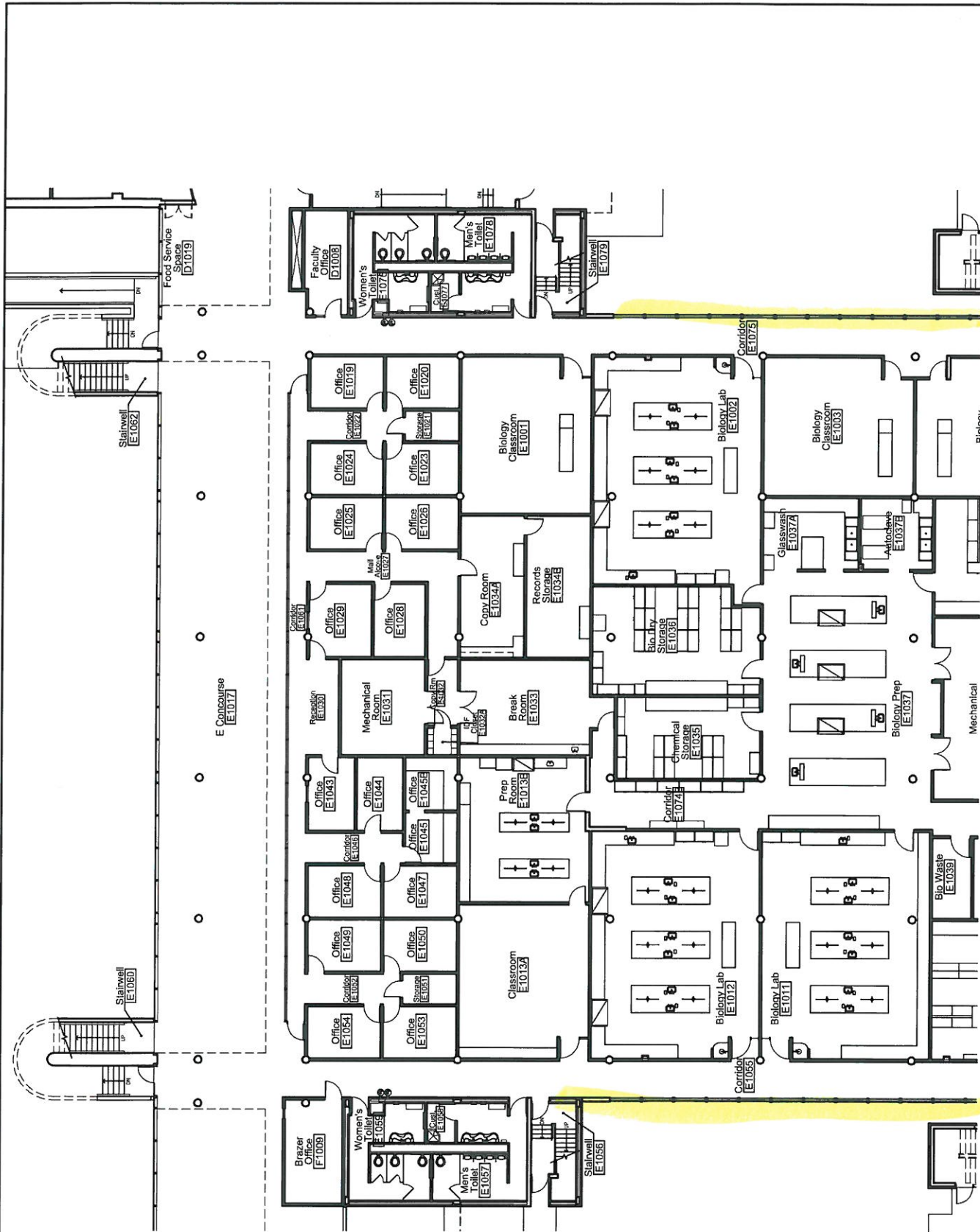
D BUILDING FIRST FLOOR PLAN

NTS



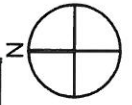
E-Building (Main Campus): The Contractor will wash:

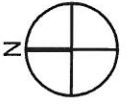
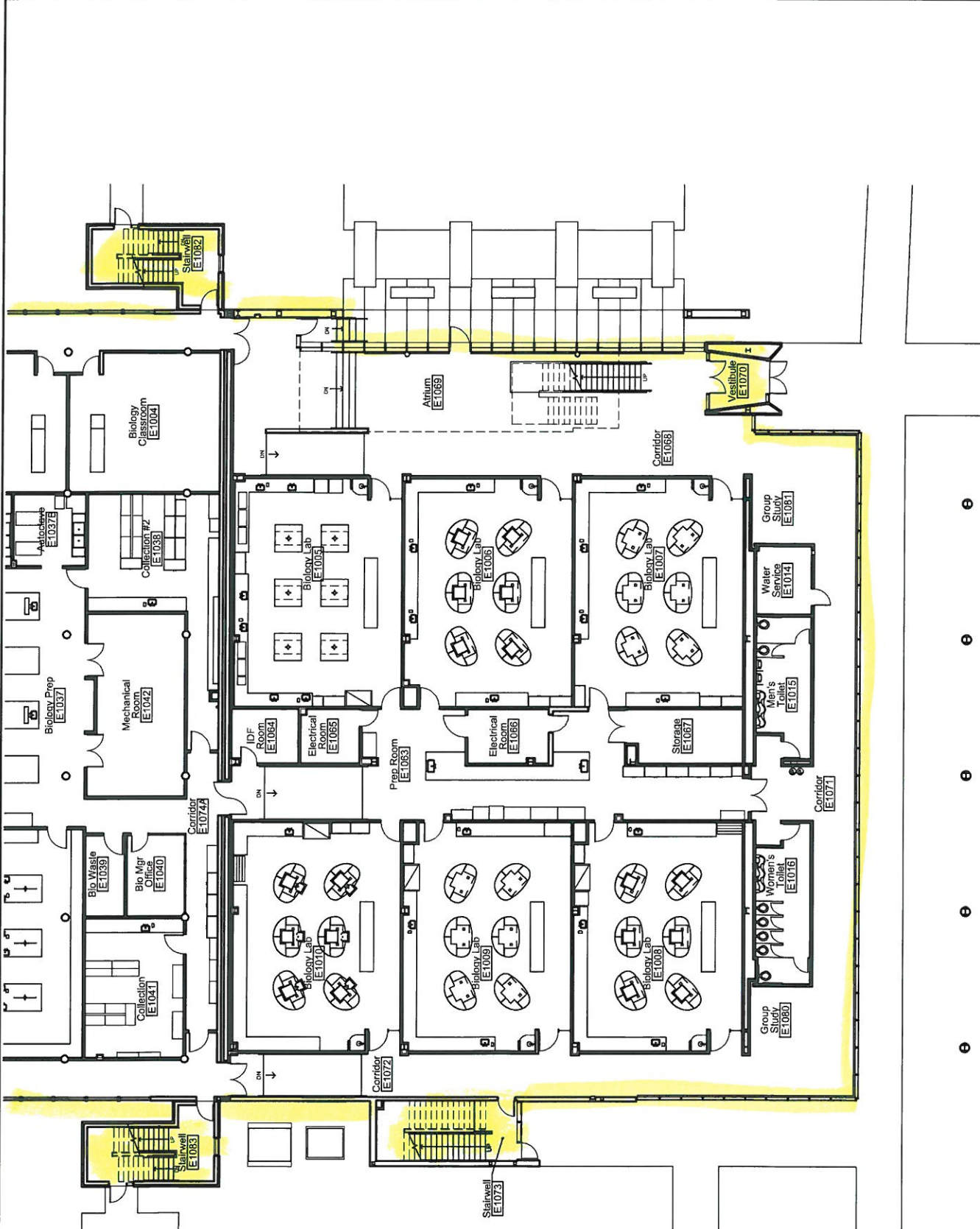
- a. All exterior windows
- b. EXCLUDING exterior concourse windows
- c. All interior windows main atrium and vestibule (1st and 2nd floor), south corridor 1st floor, west corridor 1st floor to stairwell, ESW stairwell, ECW stairwell, ECE stairwell



E BUILDING FIRST FLOOR PLAN (NORTH)

NTS





E BUILDING FIRST FLOOR PLAN (SOUTH)

NTS



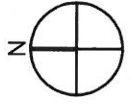
G-Building & F-Building (Main Campus): The Contractor will wash:

a. G-Building

- i. All interior Fitness Center windows
- ii. All exterior windows
- iii. EXCLUDING exterior concourse windows
- iv. Interior entrance and vestibule
- v. GSE and GSW interior stairwells

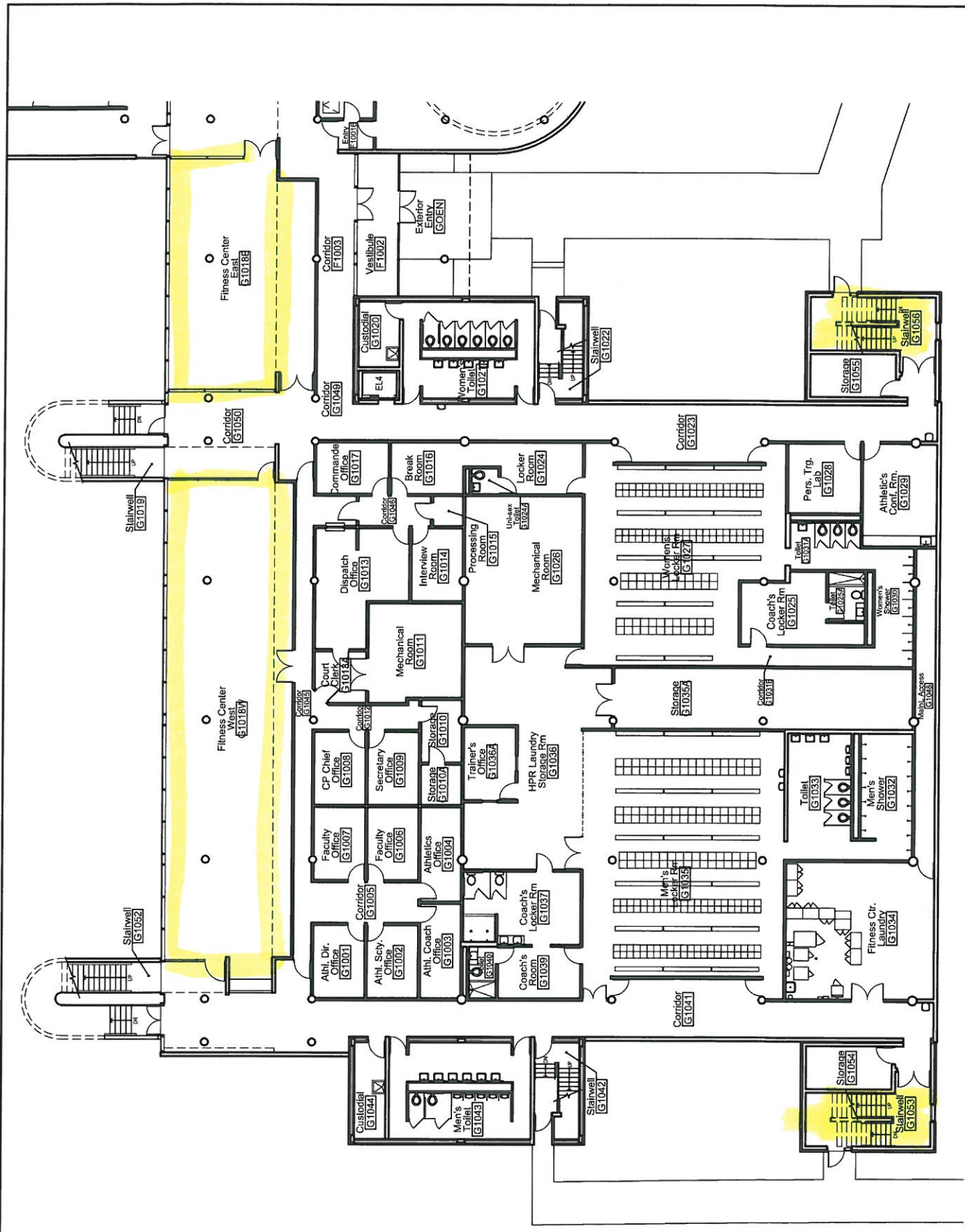
b. F-Building

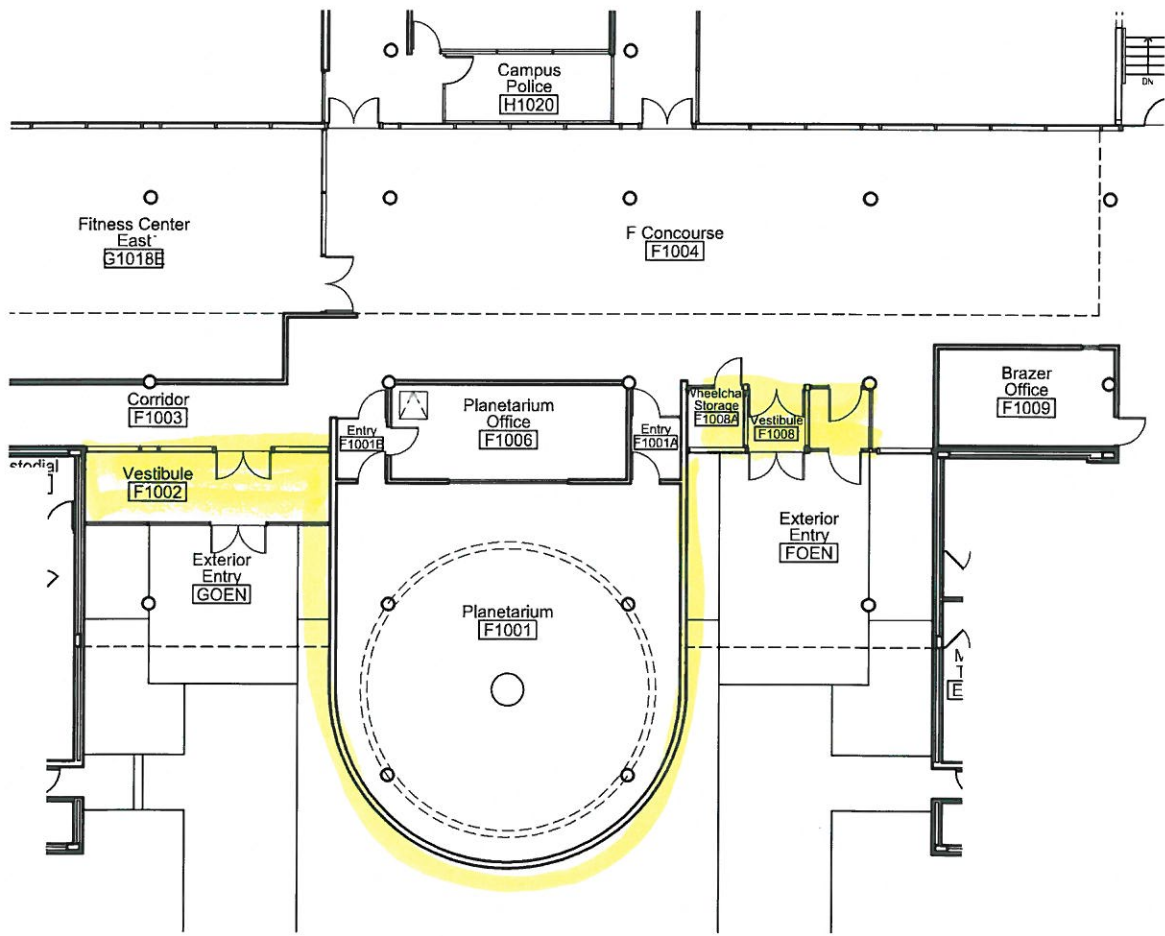
- i. All exterior windows/glass bricks
- ii. EXCLUDING exterior concourse windows
- iii. Interior entrance and vestibule



G BUILDING FIRST FLOOR PLAN

NTS





F BUILDING FIRST FLOOR PLAN

NTS

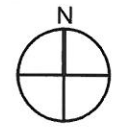
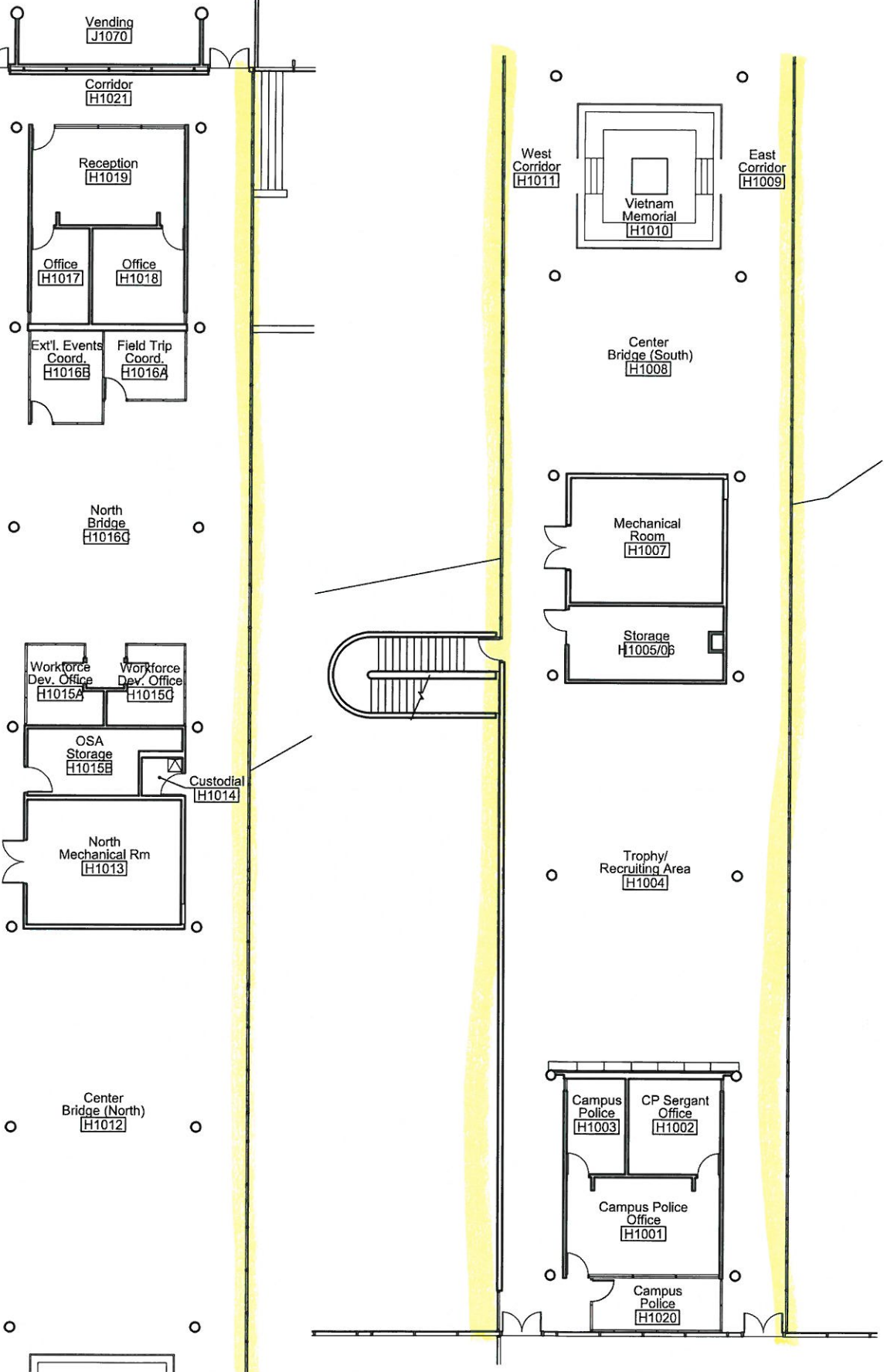


H-Bridge (Main Campus): The Contractor will wash:

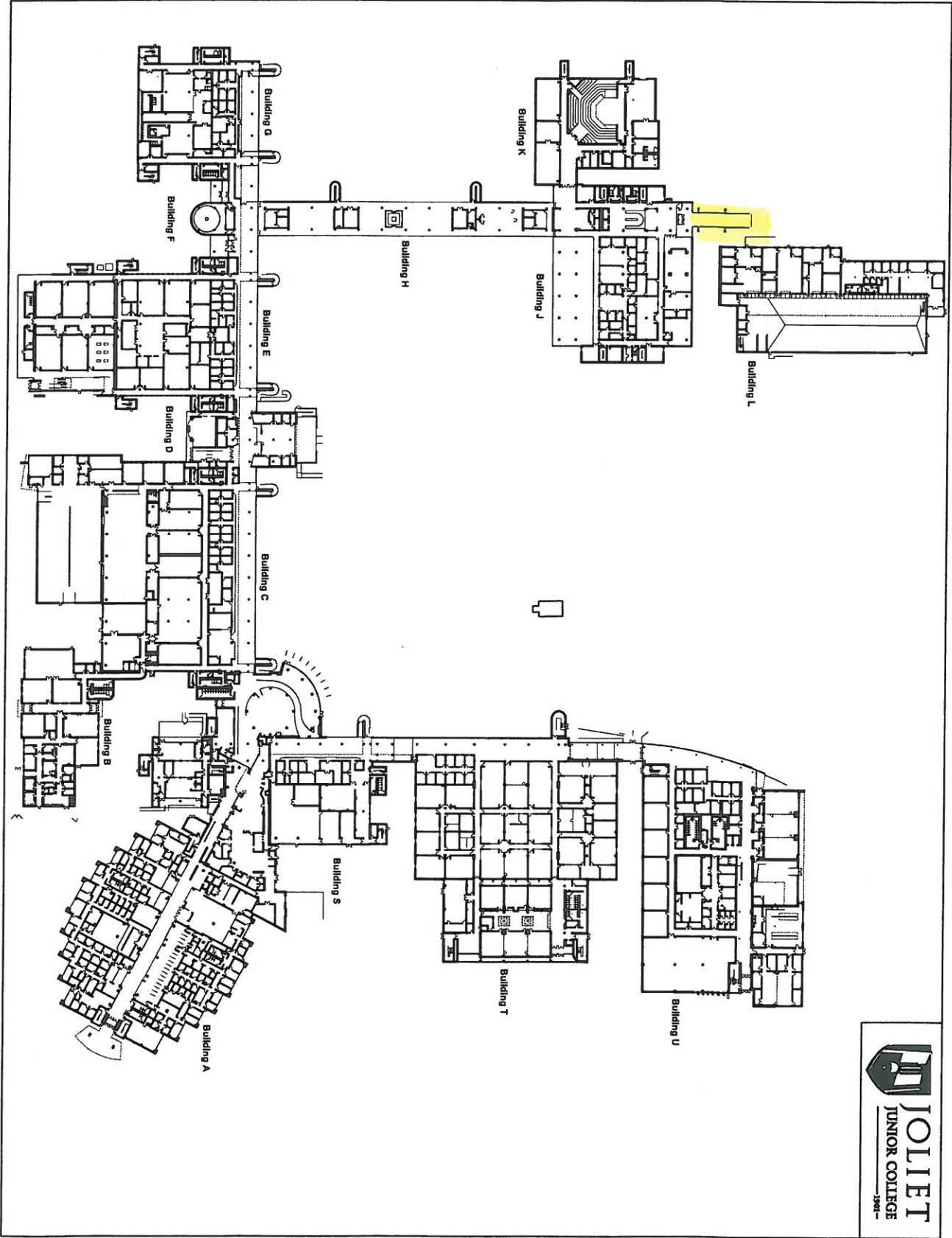
- a. All exterior bridge windows
- b. Contractor must be able to wash windows without the use of any direct tie-locations available from roof area.

H BUILDING FIRST FLOOR PLAN

NTS

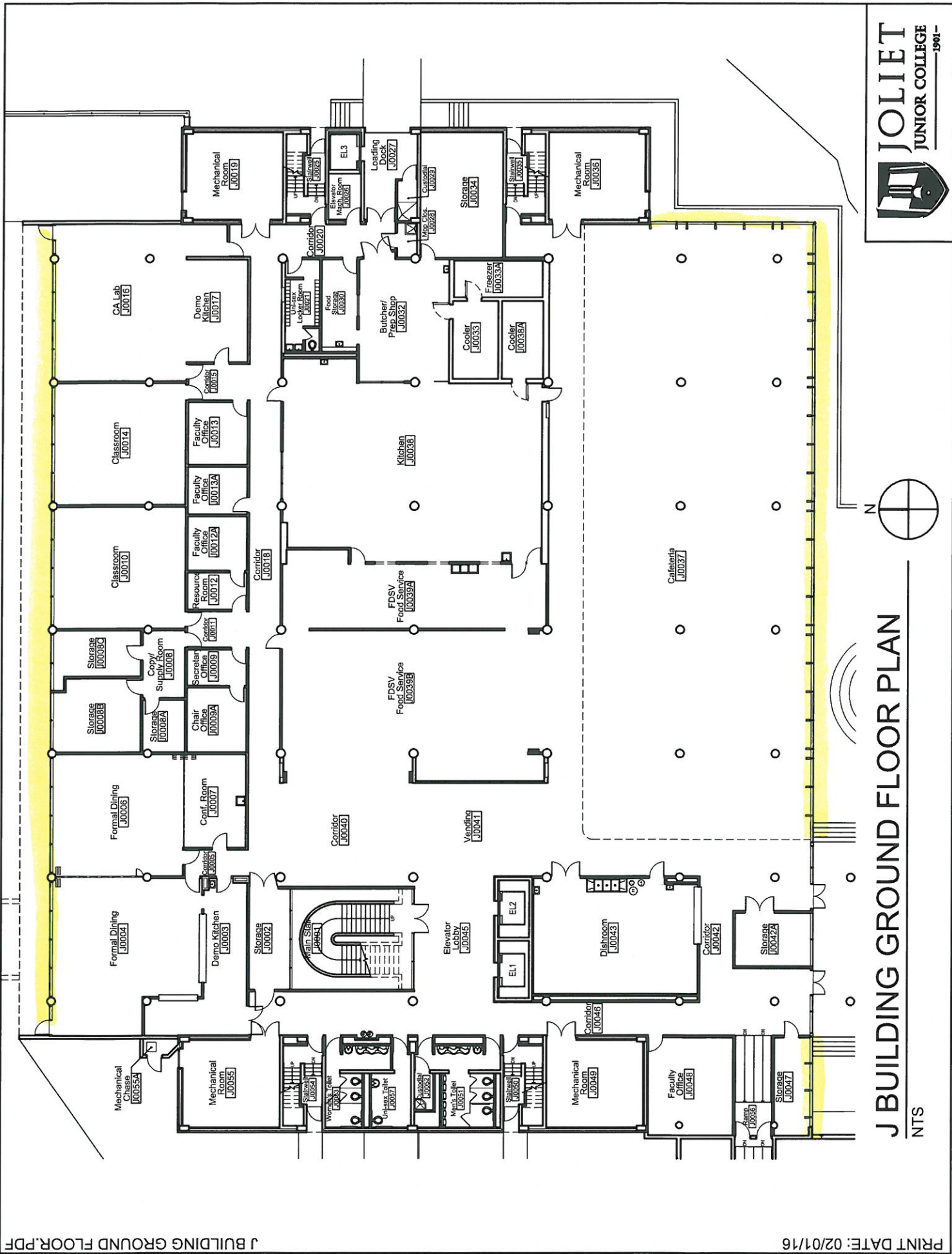


J-Building Entrance Ramp (Main Campus): The Contractor will wash:
a. All entrance ramp windows



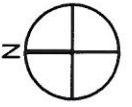
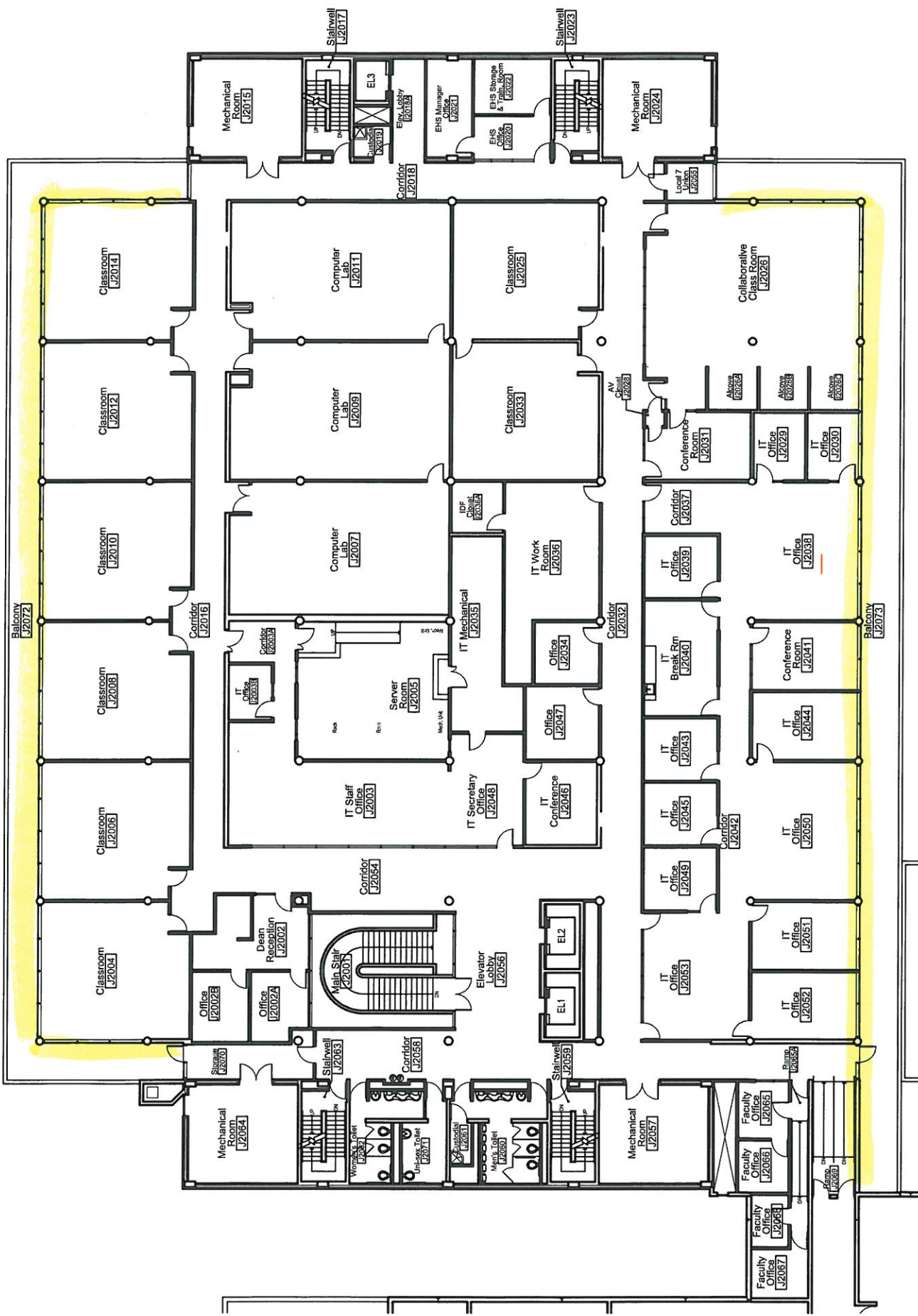
J-Building (Main Campus): The Contractor will wash:

- a. All exterior windows accessible from ground, 2nd floor walk-outs and 3rd floor walk-outs
- b. Interior windows in J-0037 ("old cafeteria") ground and 1st floor



J BUILDING GROUND FLOOR PLAN

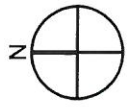
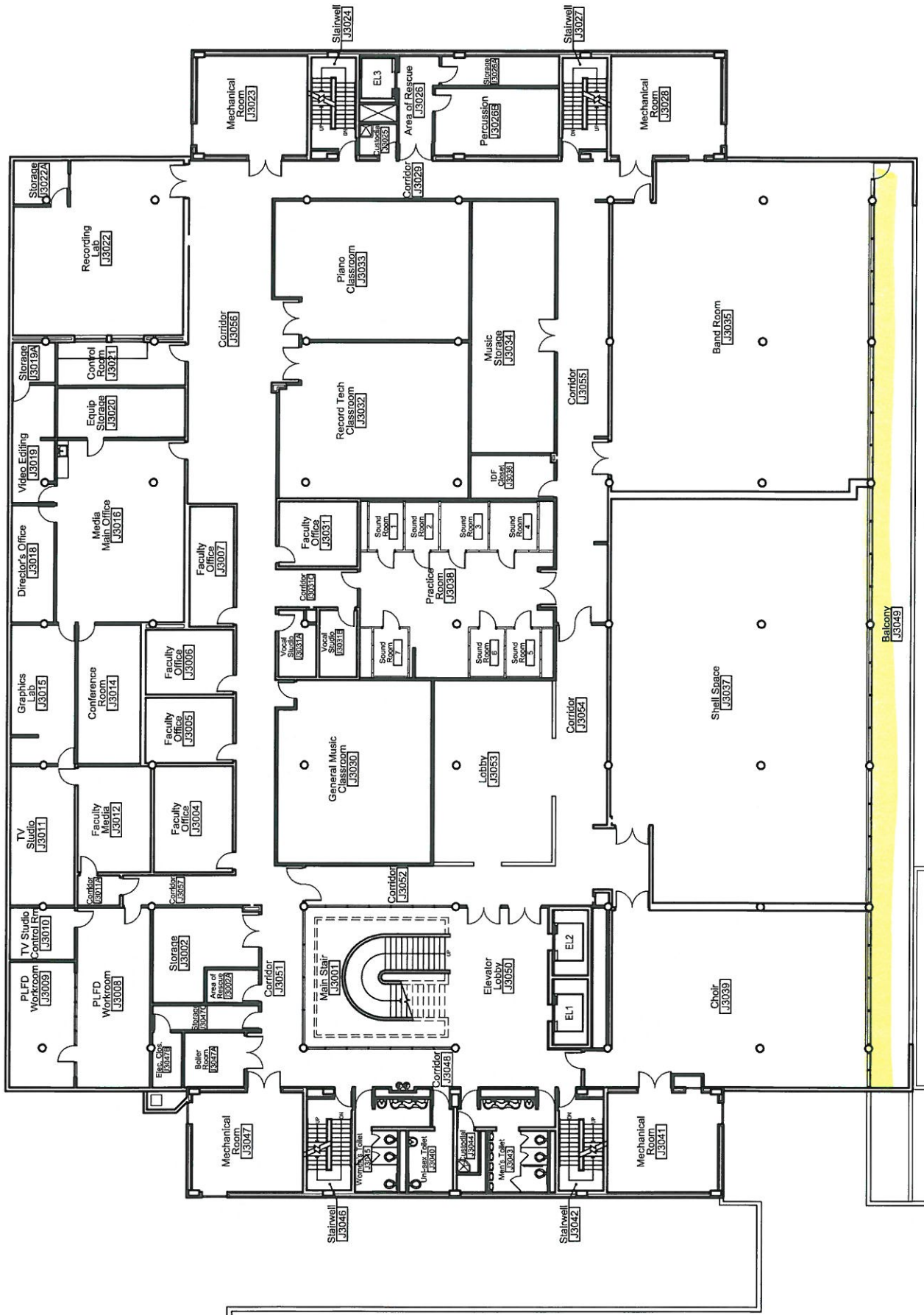
NTS



J BUILDING SECOND FLOOR PLAN

NTS



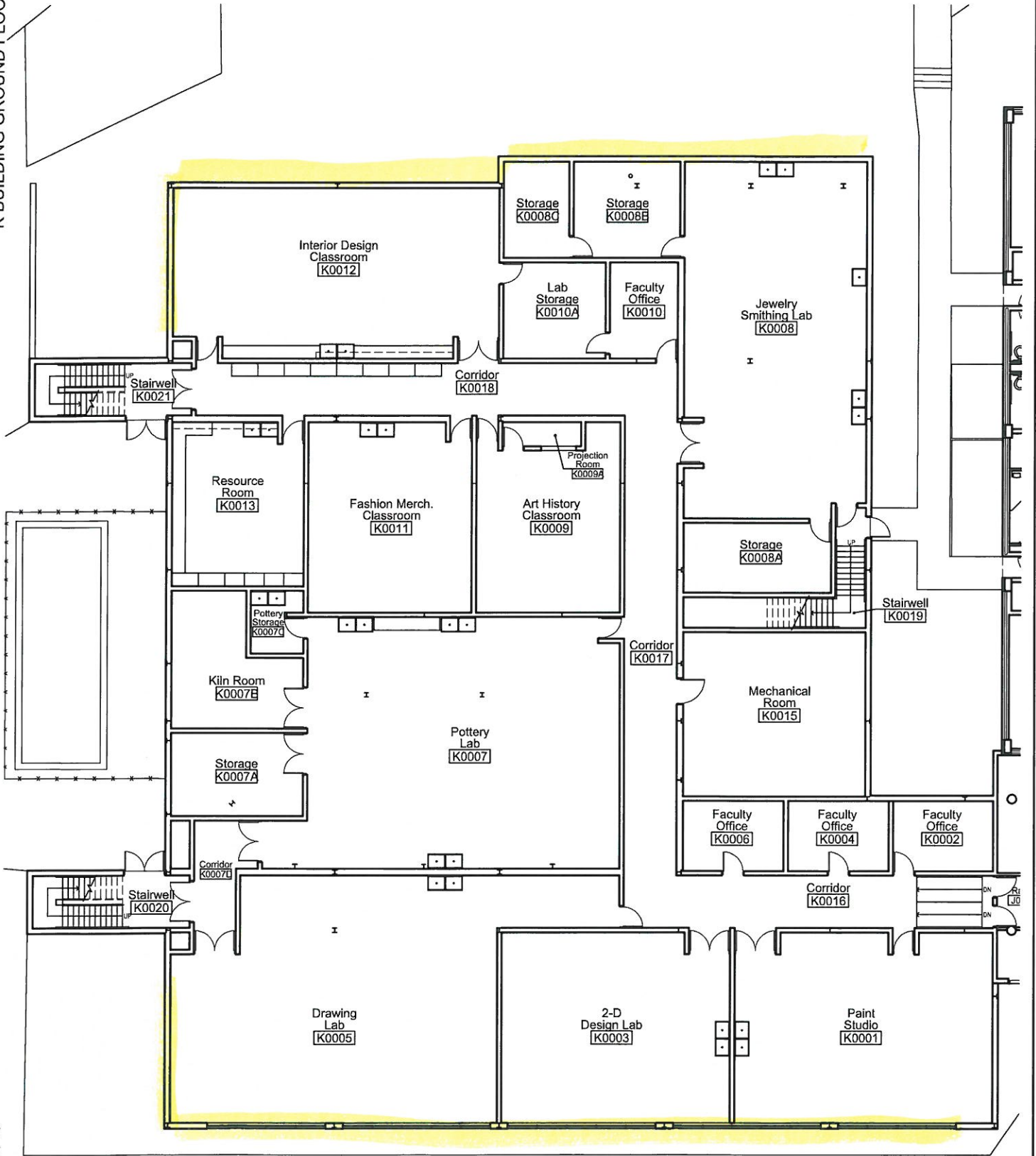


J BUILDING THIRD FLOOR PLAN

NTS



K-Building (Main Campus): The Contractor will wash:
a. All exterior windows accessible from ground



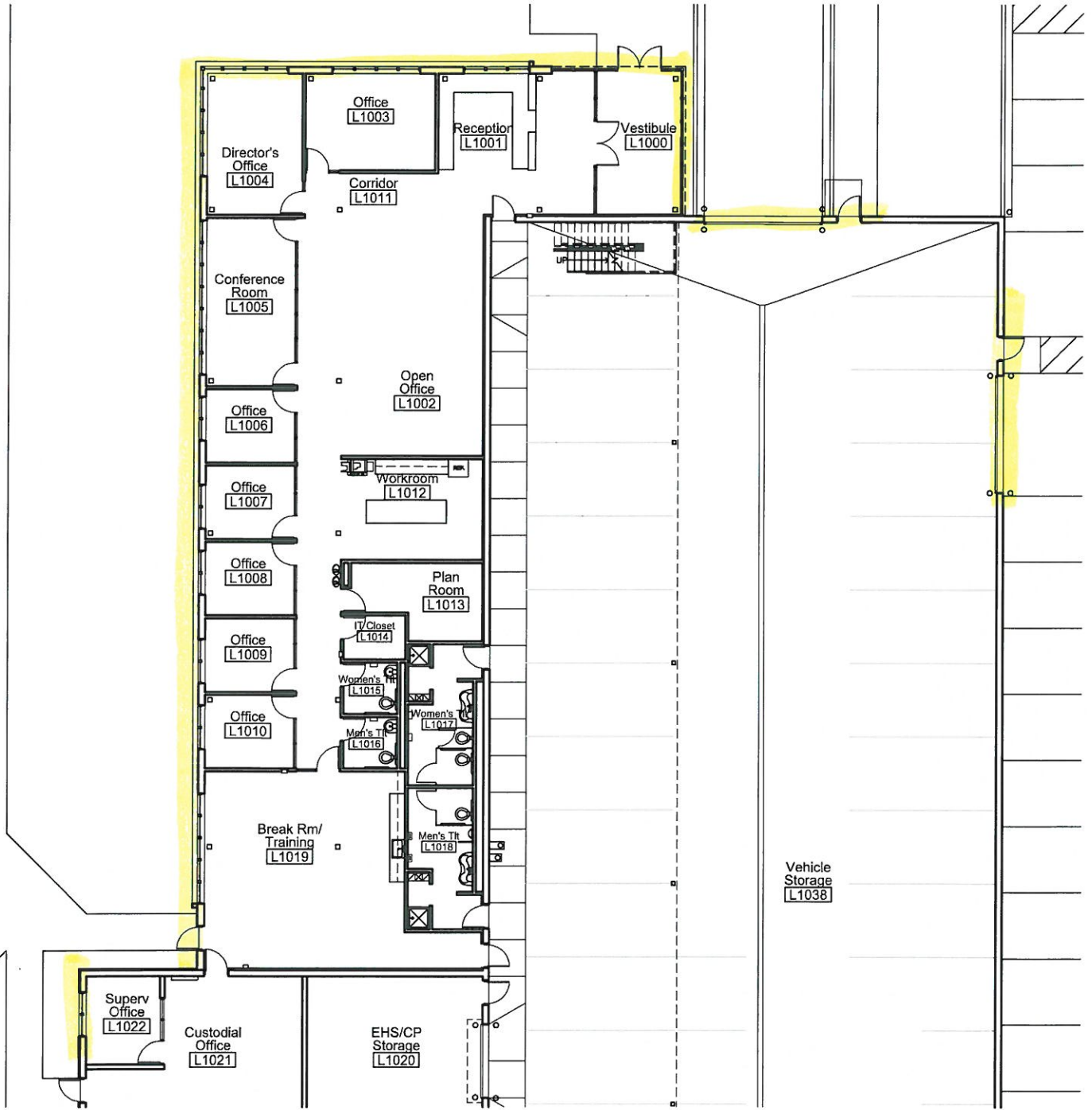
K BUILDING GROUND FLOOR PLAN

NTS



L-Building (Main Campus): The Contractor will wash:

- a. All exterior windows
- b. Interior and exterior of overhead garage door windows

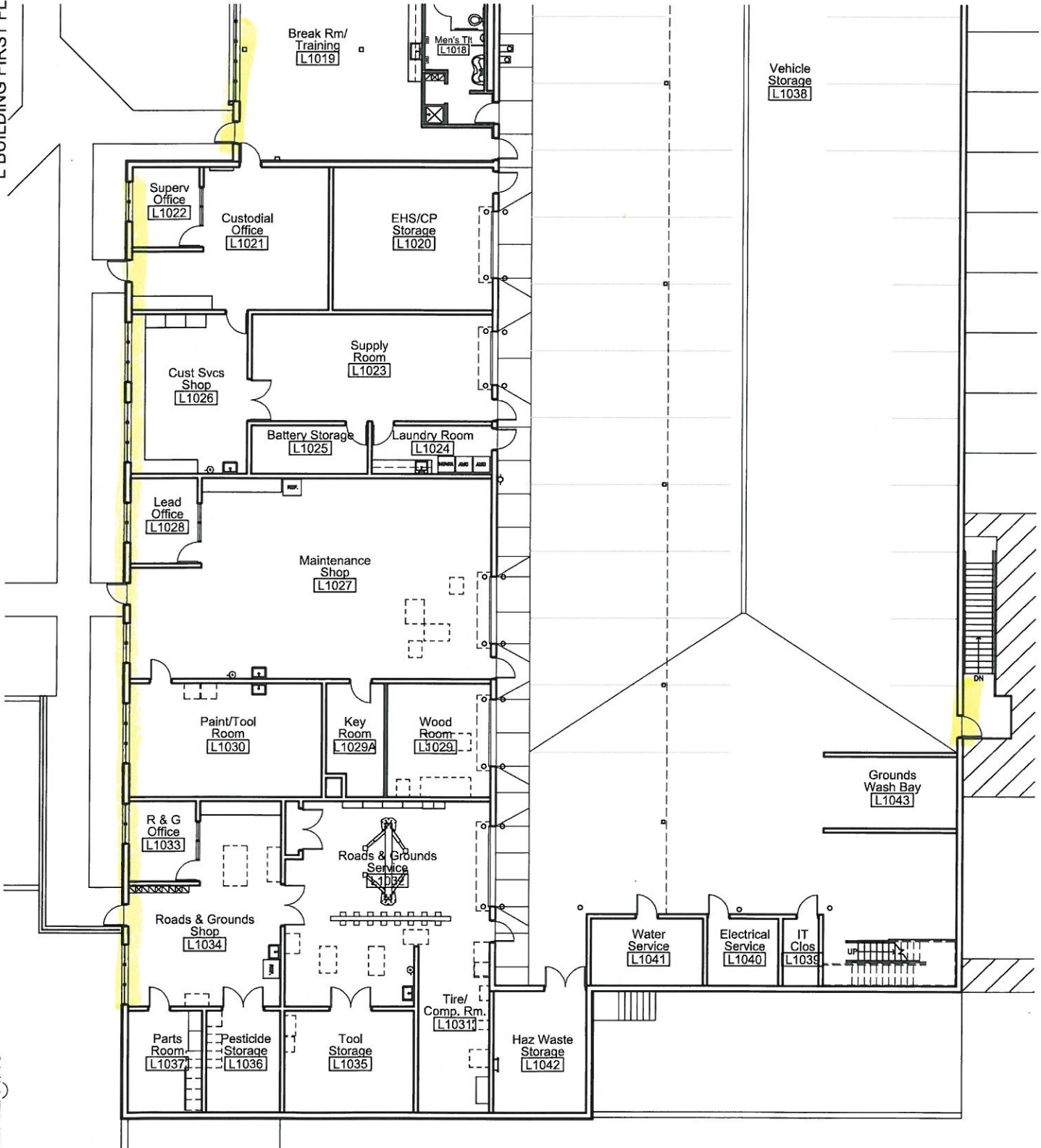


L BUILDING FIRST FLOOR PLAN (NORTH)

NTS



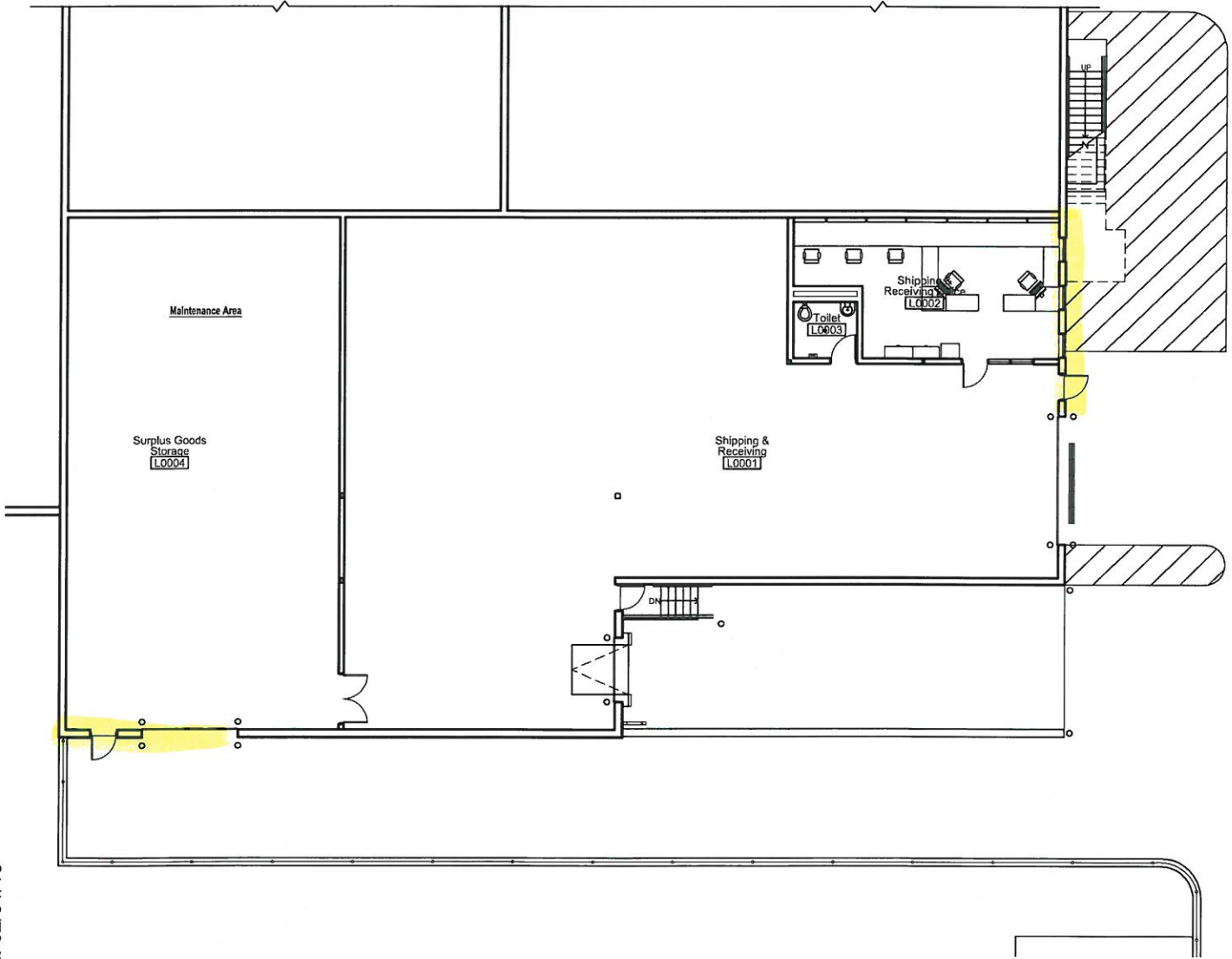
JOLIET
JUNIOR COLLEGE
 1901-



L BUILDING FIRST FLOOR PLAN (SOUTH)

NTS





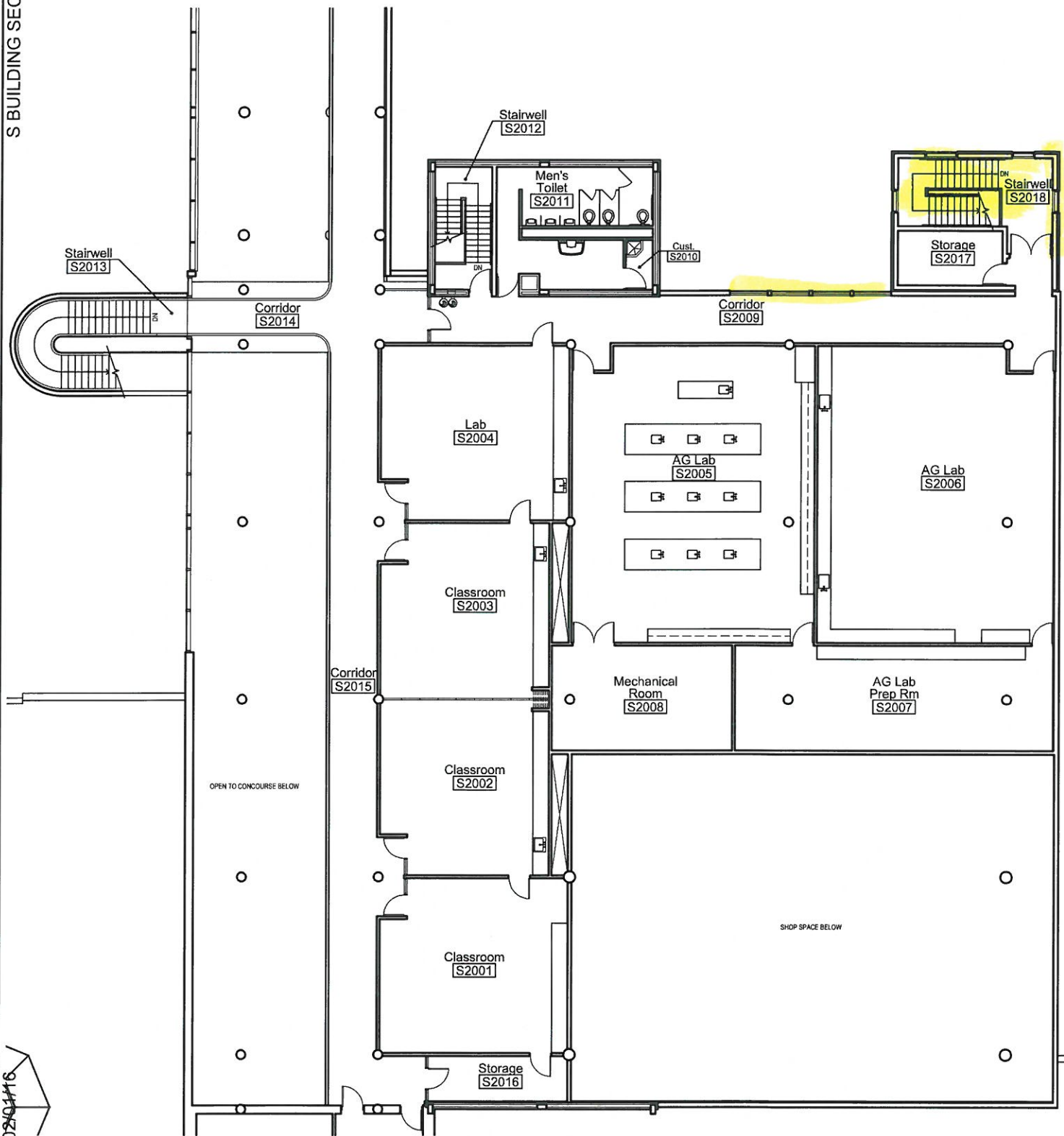
L BUILDING GROUND FLOOR PLAN

NTS



S-Building (Main Campus): The Contractor will wash:

- a. All exterior windows
- b. EXCLUDING exterior concourse windows
- c. Interior of SNE Stairwell



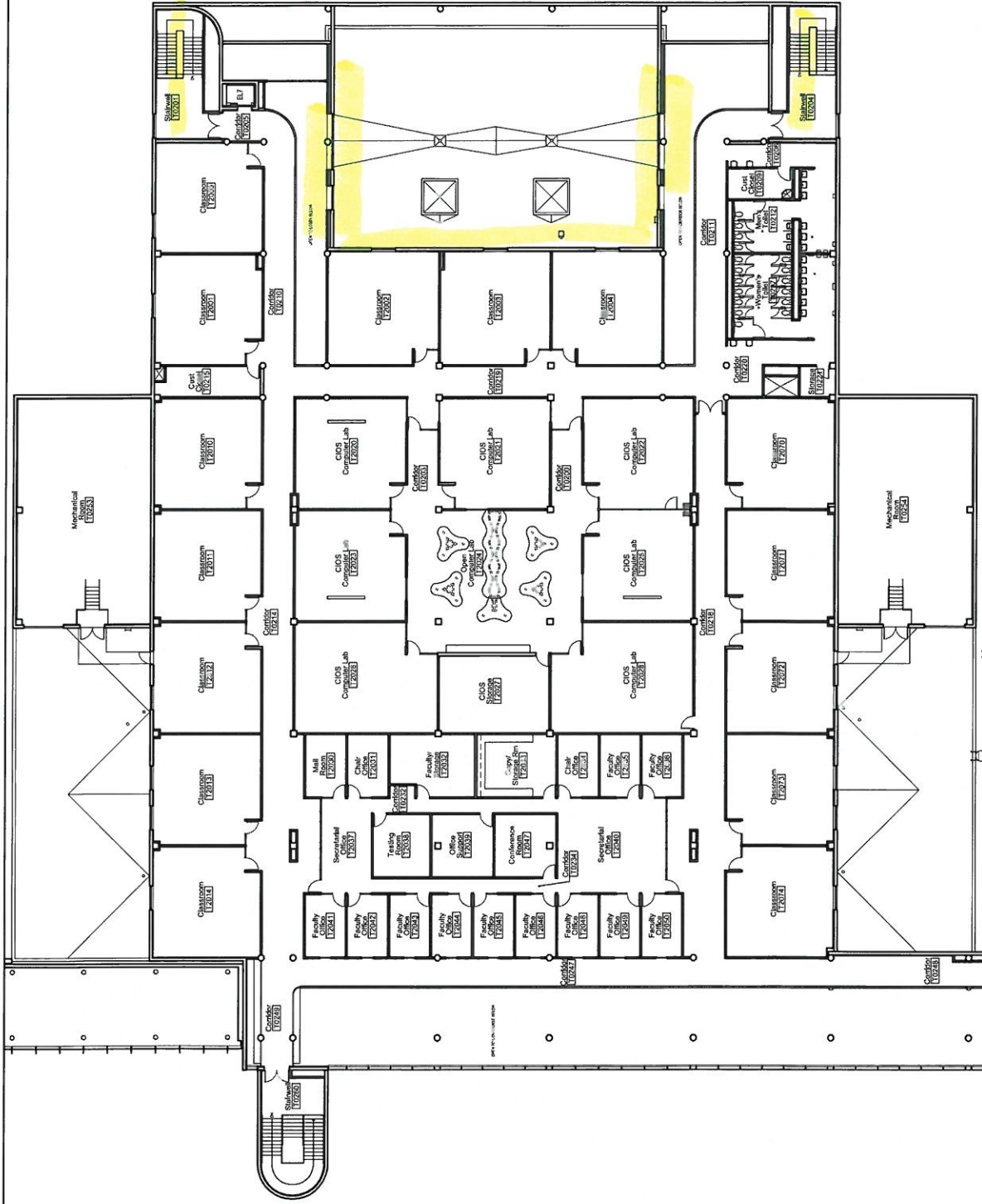
S BUILDING SECOND FLOOR PLAN

NTS



T-Building (Main Campus): The Contractor will wash:

- a. All exterior windows
- b. EXCLUDING exterior concourse windows
- c. All interior Conference Center windows
- d. All interior Will County Traffic School windows



T BUILDING SECOND FLOOR PLAN
NTS

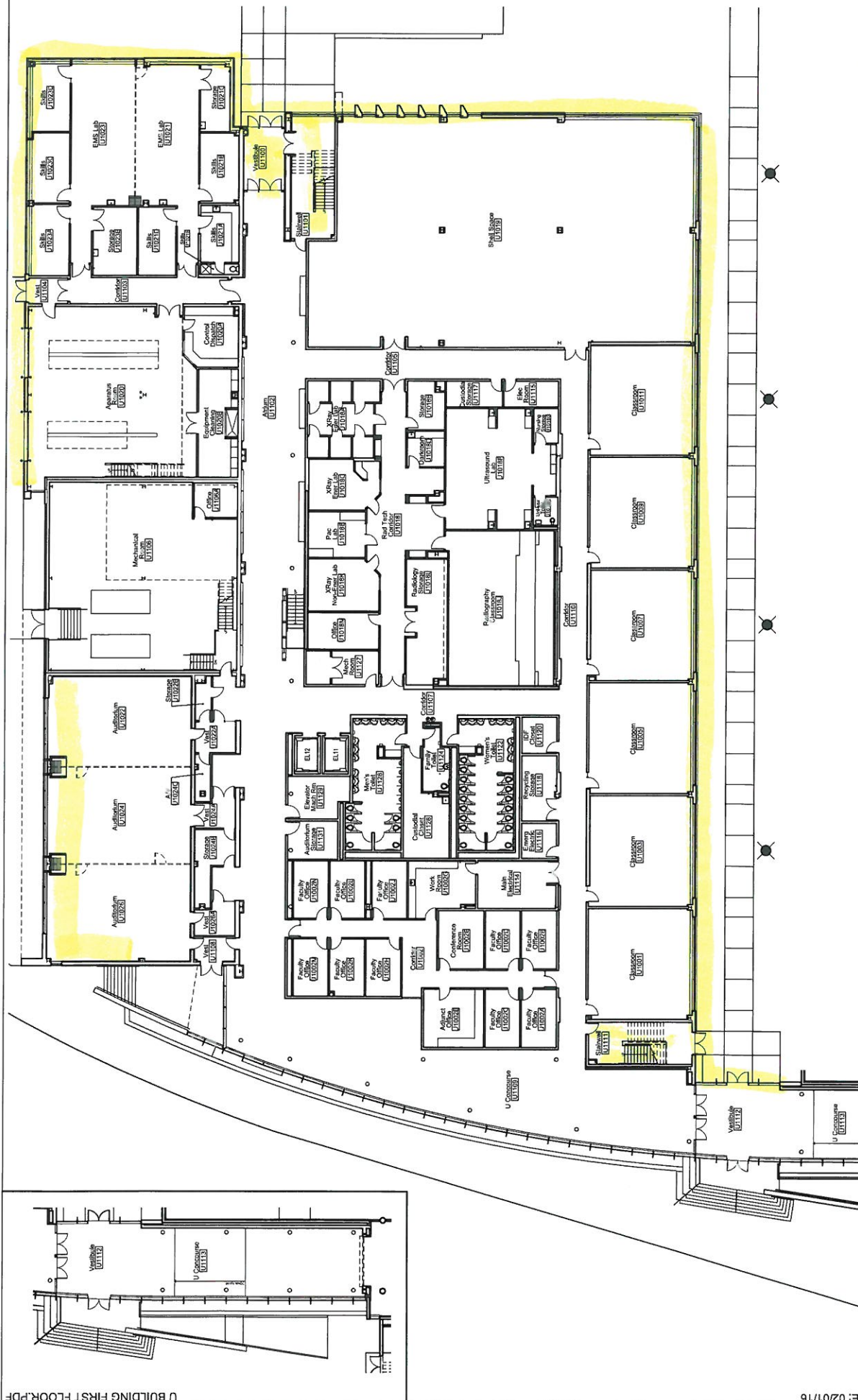
U-Building (Main Campus): The Contractor will wash:

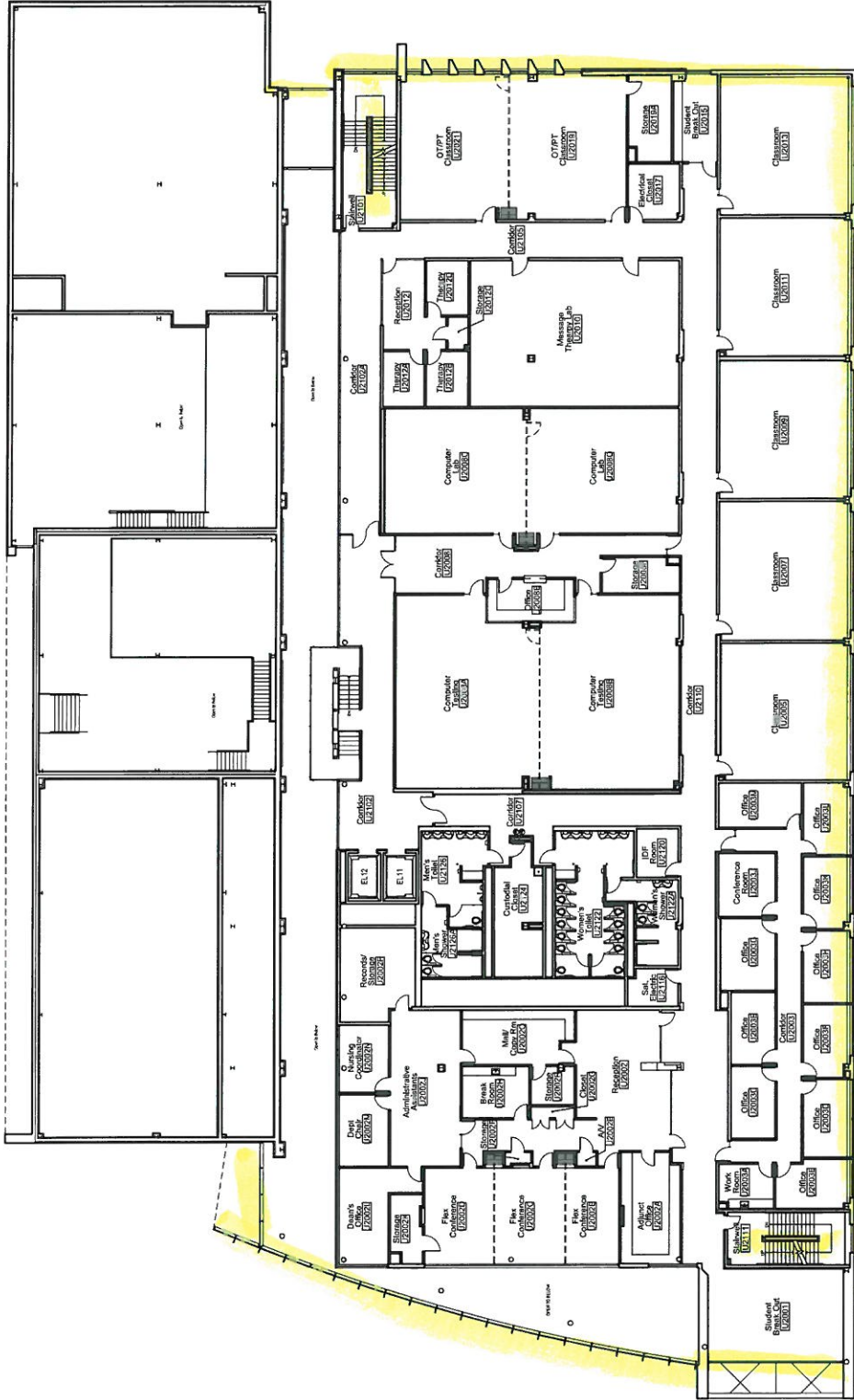
- a. All exterior windows
- b. Interior vestibule entrance windows
- c. Interior UNE and USW stairwells
- d. EXCLUDING exterior concourse windows and U-auditorium exterior windows
- e. Interior and exterior overhead garage doors
- f. Interior windows to including U-auditorium (U-1022, U-1024 and U-1026)



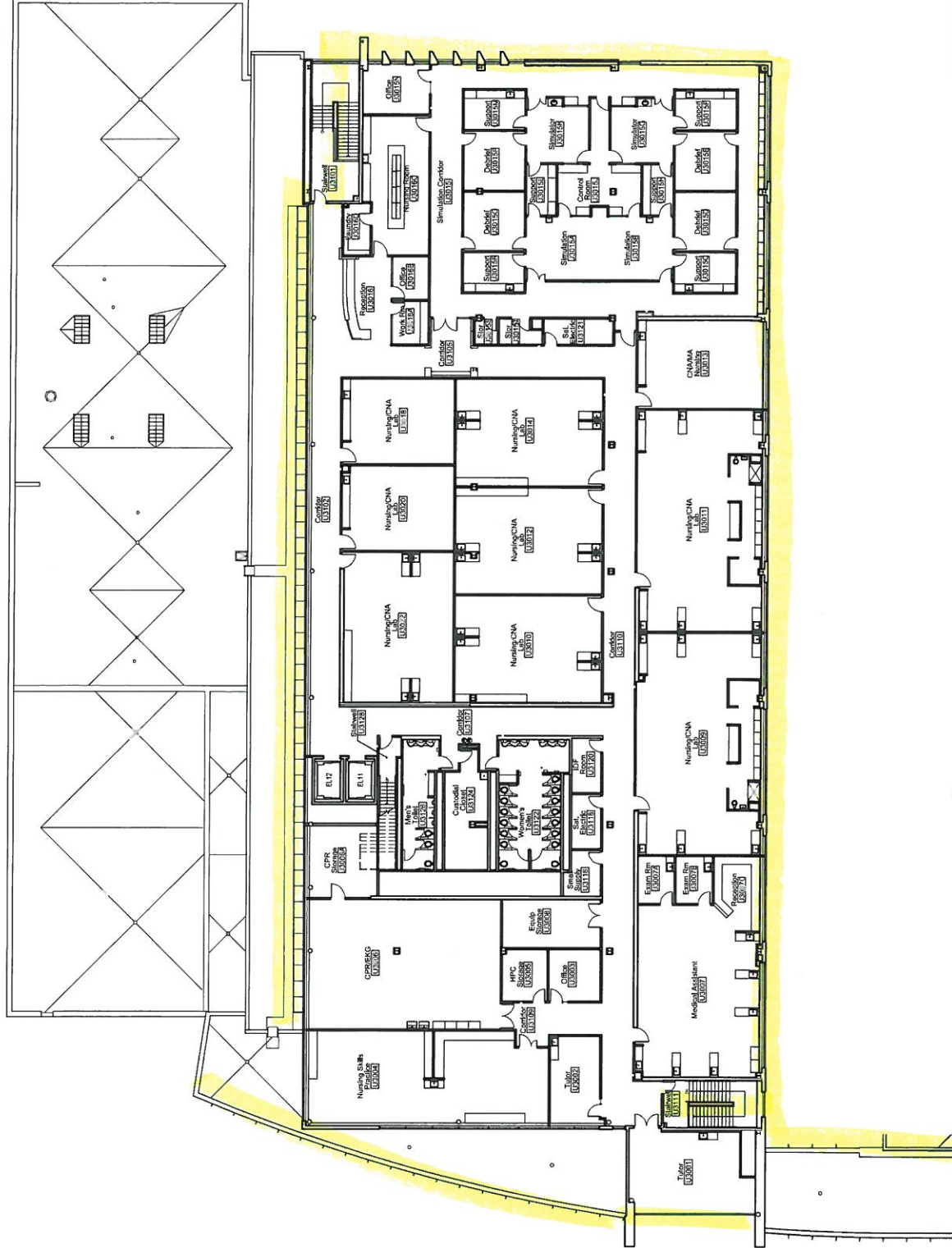
U BUILDING FIRST FLOOR PLAN

NTS





U BUILDING SECOND FLOOR PLAN
NTS

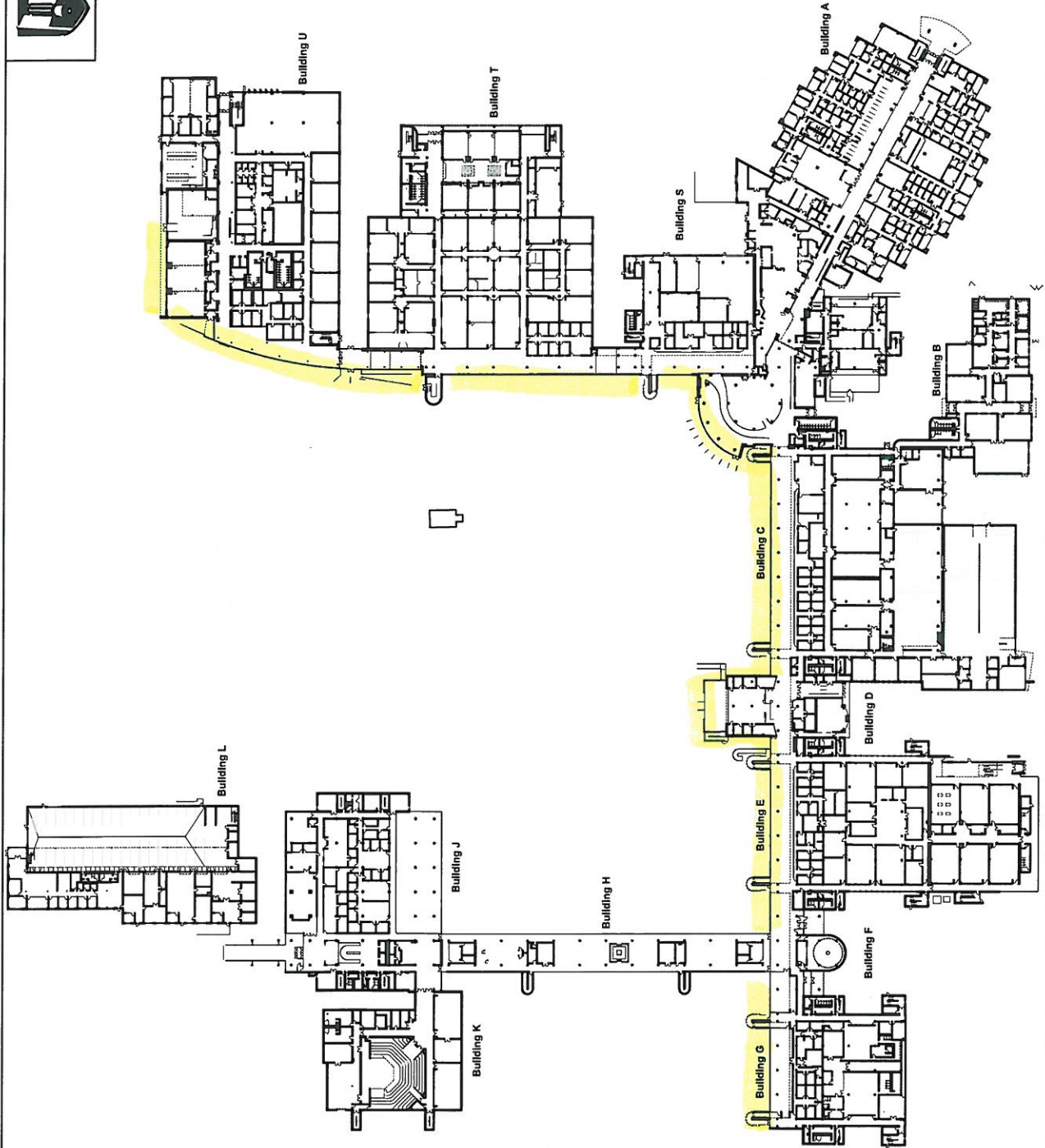


U BUILDING THIRD FLOOR PLAN
NTS



Concourse (Main Campus): The Contractor will wash:

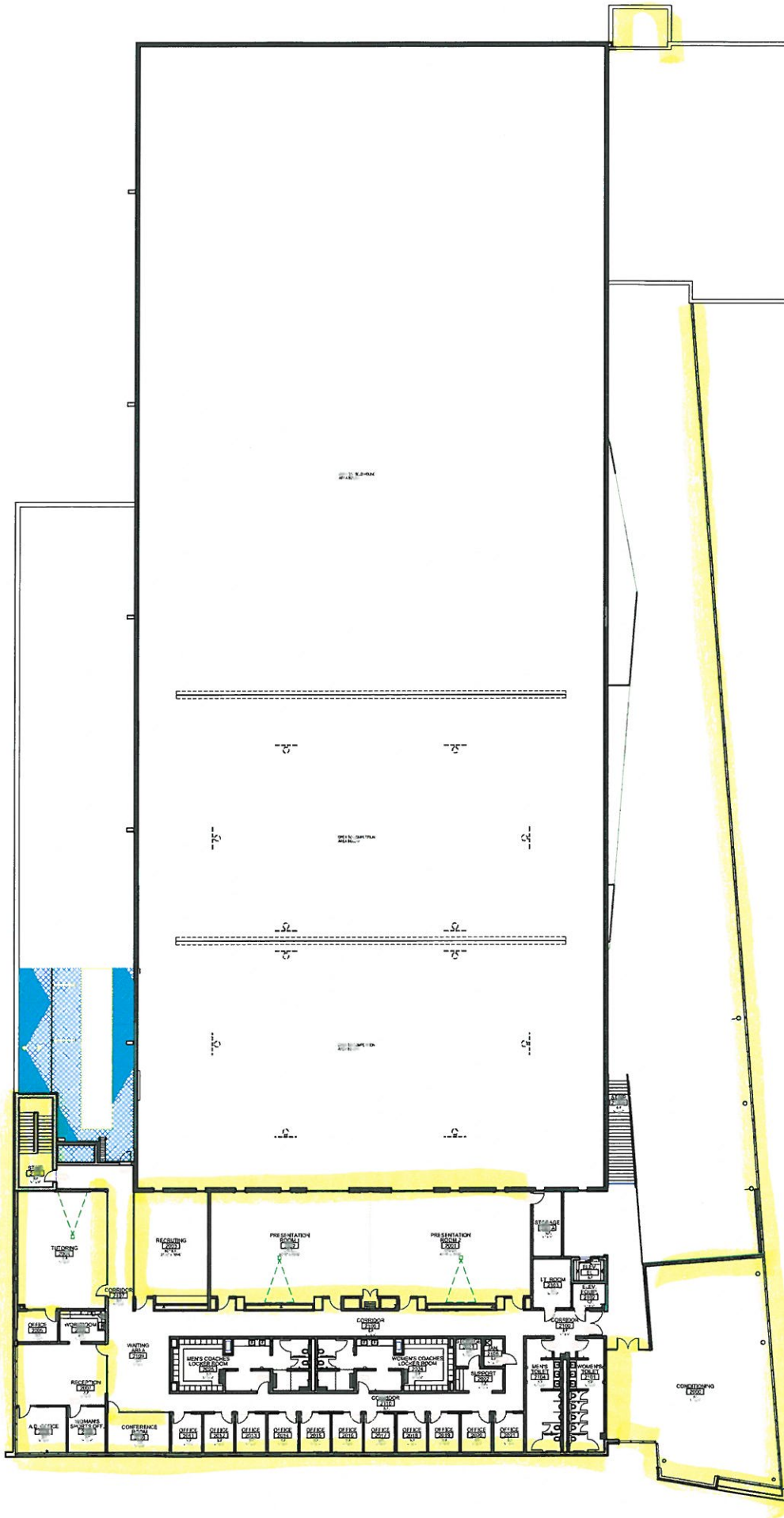
- a. All exterior concourse windows for buildings A, C, D, E, F, G, S, T, & U
- b. U-building to include exterior Auditorium windows



Events Center (Main Campus): The Contractor will wash:

- a. All exterior windows
- b. All entrance and interior vestibule windows
- c. Main concourse interior windows
- d. Conditioning rooms interior and concourse facing windows
- e. Rooms 2010, 2007, 2004, 2003, 2002, 2001 interior and hallway windows to include display cabinets
- f. Fieldhouse interior windows
- g. All interior stairwell windows

Event Center



Romeoville Campus: The Contractor will wash:

a. All exterior windows, RMA and RMB buildings

b. RMA

i. All exterior windows

ii. Cafateria and Multipurpose interior windows

iii. Interior public area windows, 1st and 2nd floor

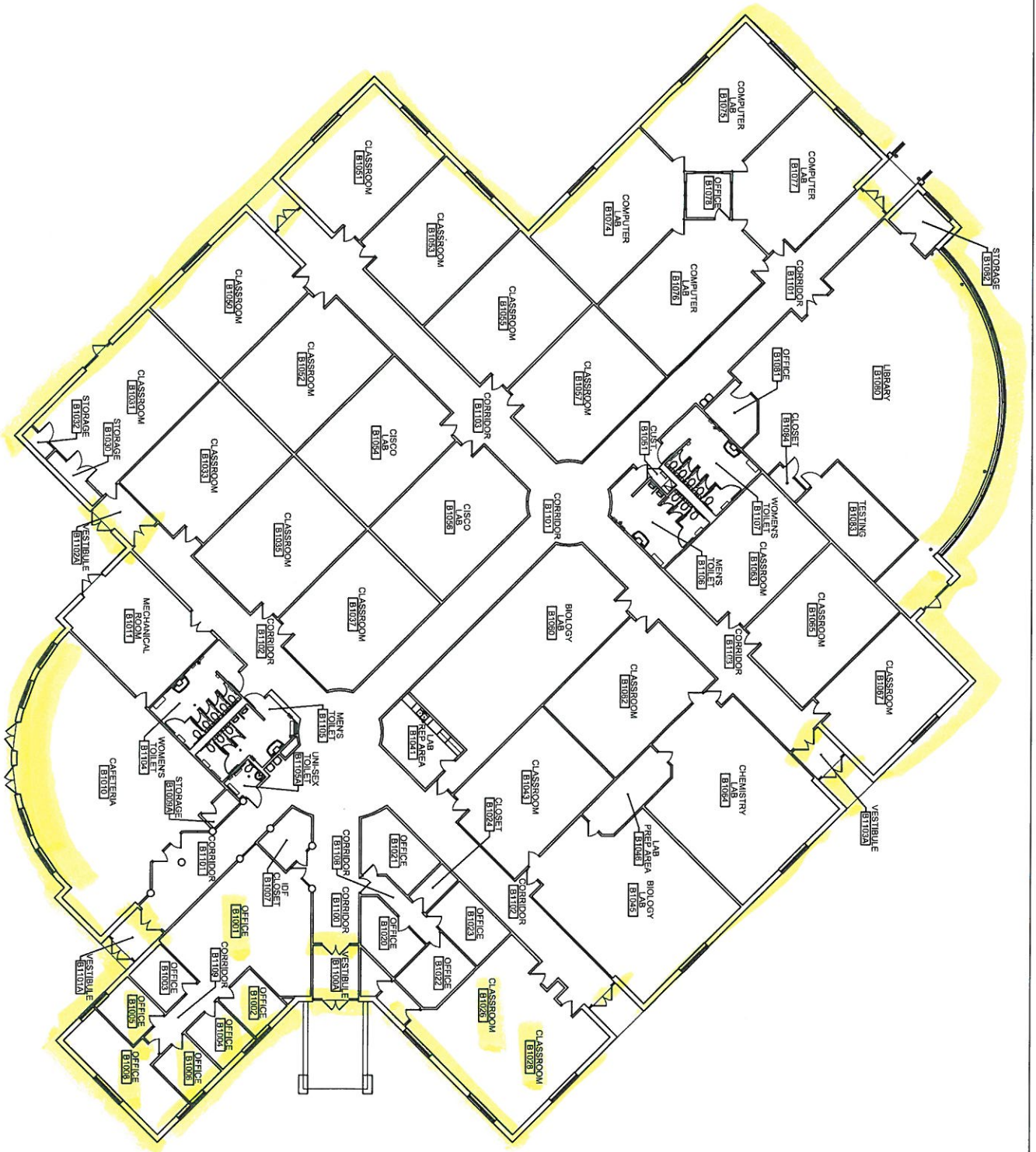
iv. All interior entrance windows and vestibule

v. All interior stairwell windows

c. RMB:

i. All exterior windows

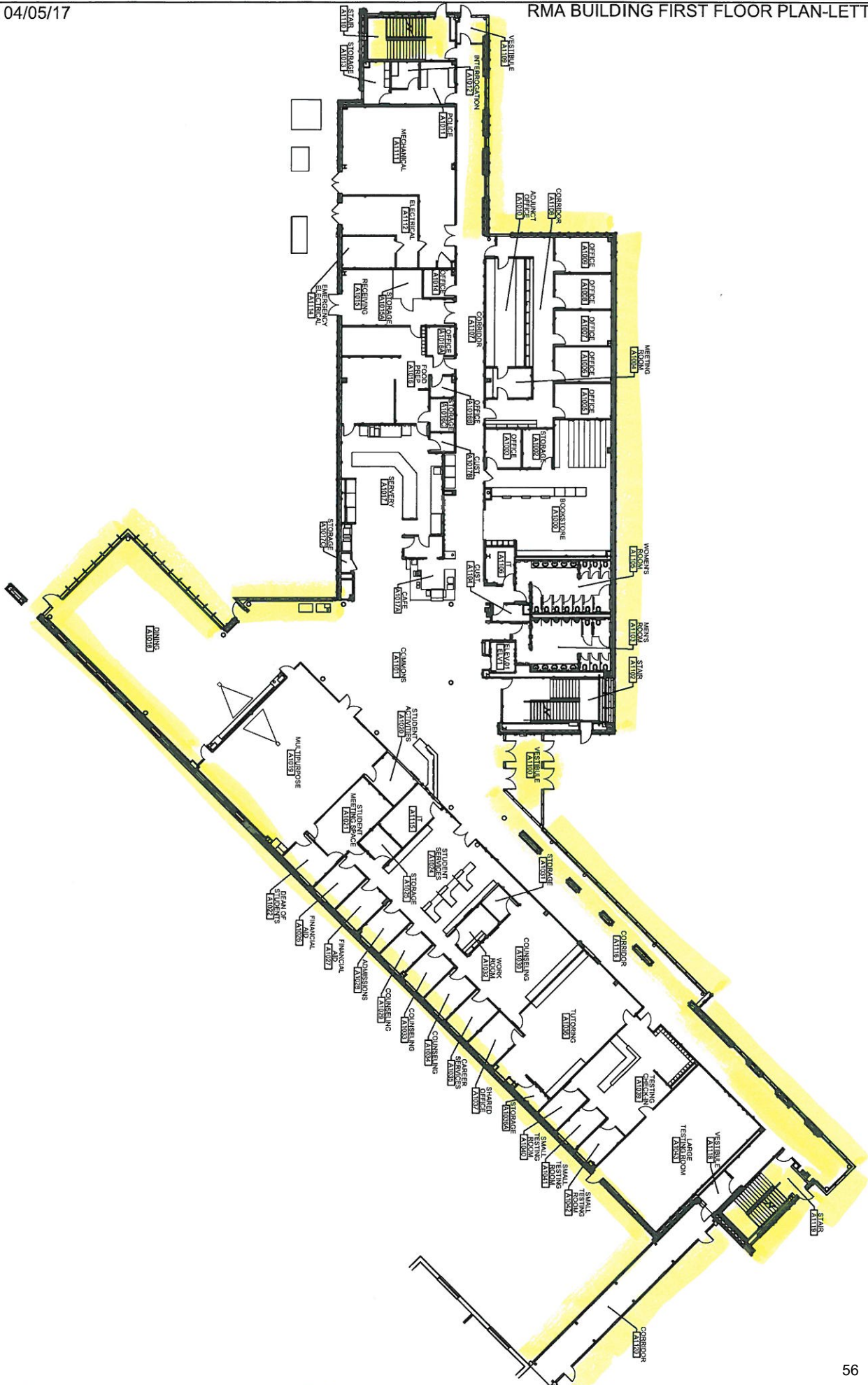
ii. Interior windows to include Student Lounge, Library, NC-28, NC-26, NC-01, NC-02, NC-04, NC-06, NC-08, NC-05 and all entrance and vestibule glass



RMB BUILDING FIRST FLOOR PLAN

NTS





RMA BUILDING FIRST FLOOR PLAN

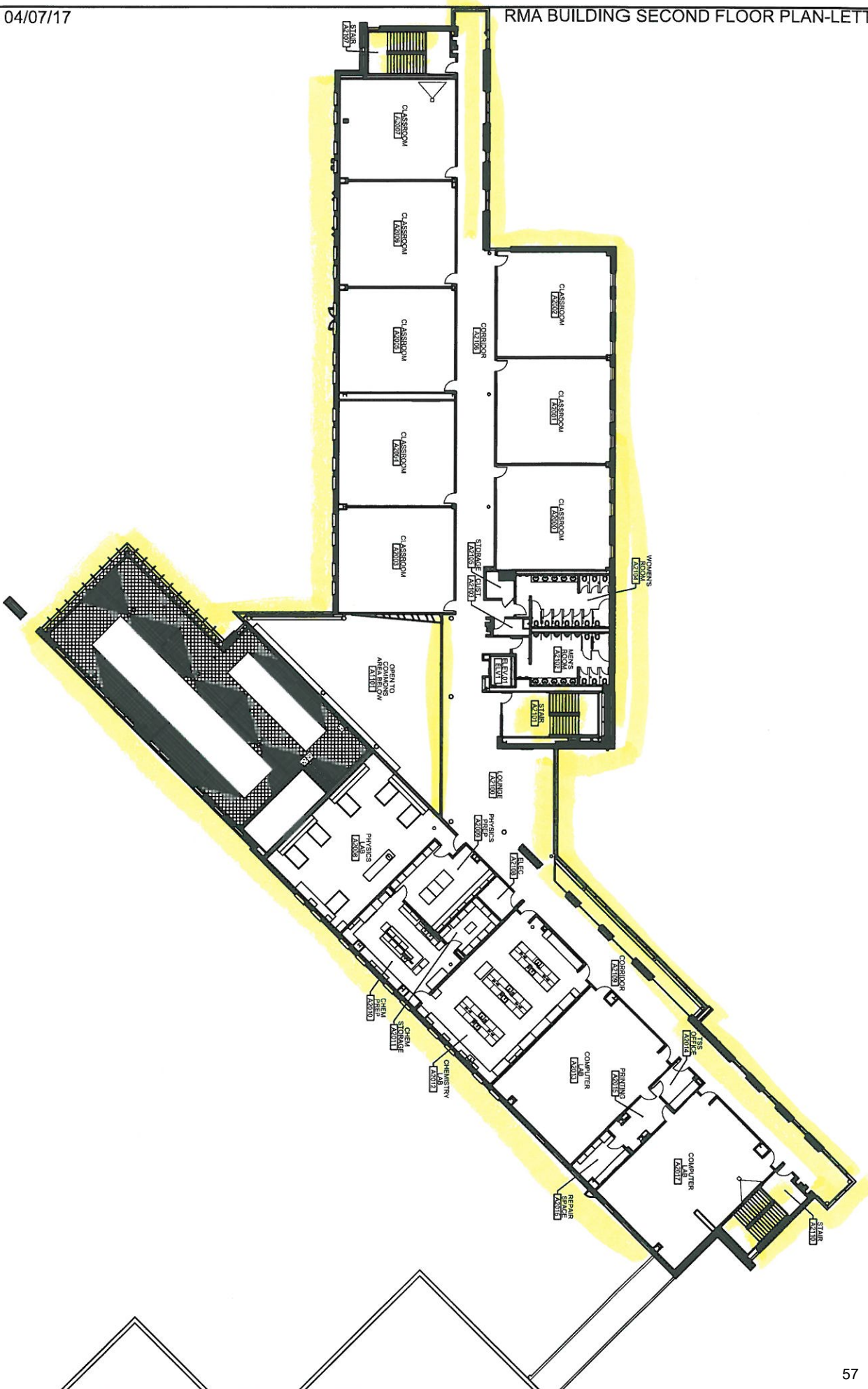
NTS



JOLIET
JUNIOR COLLEGE
1961-

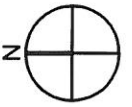
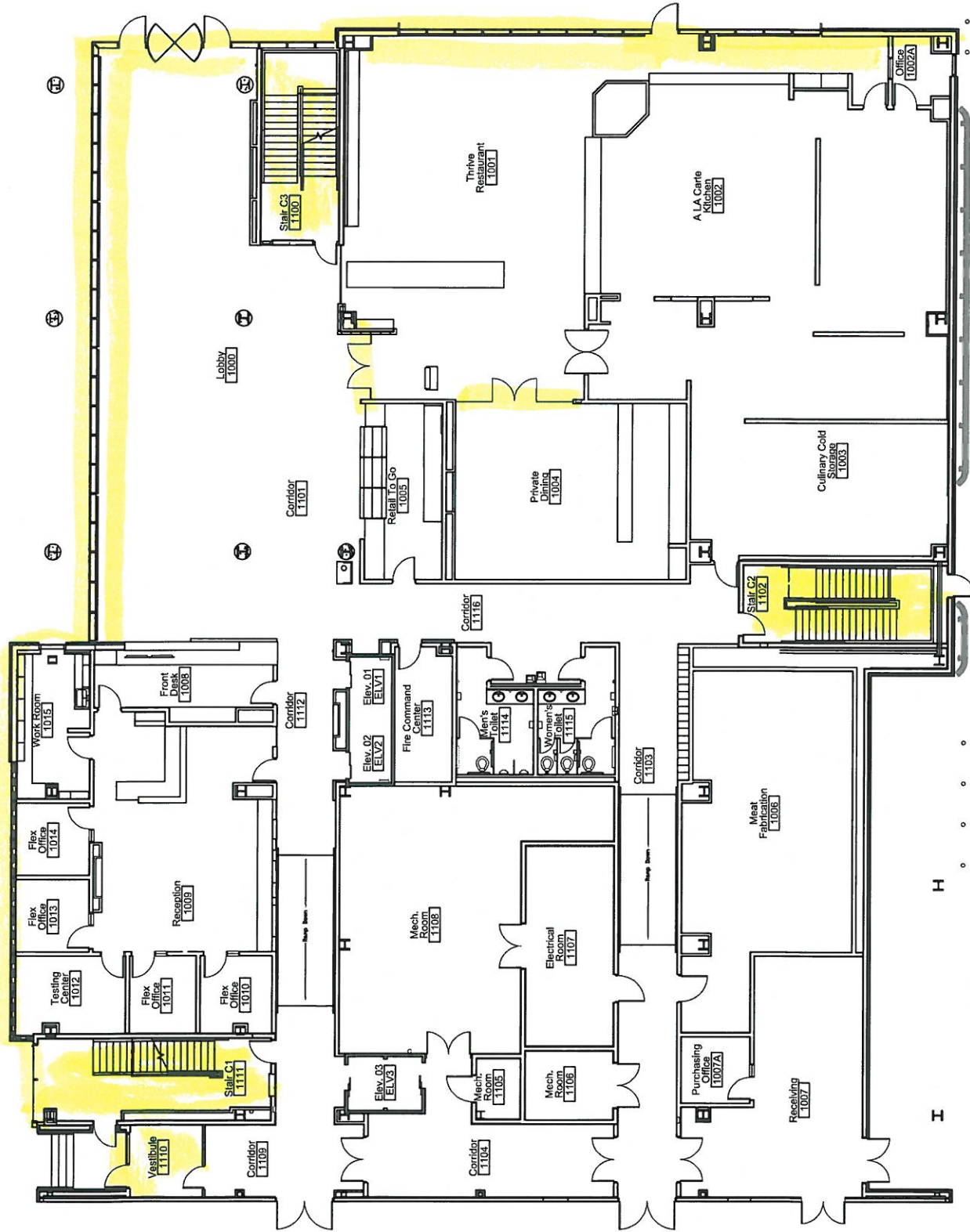
RMA BUILDING SECOND FLOOR PLAN

NTS



Joliet City Center Campus: The Contractor will wash:

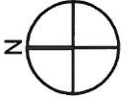
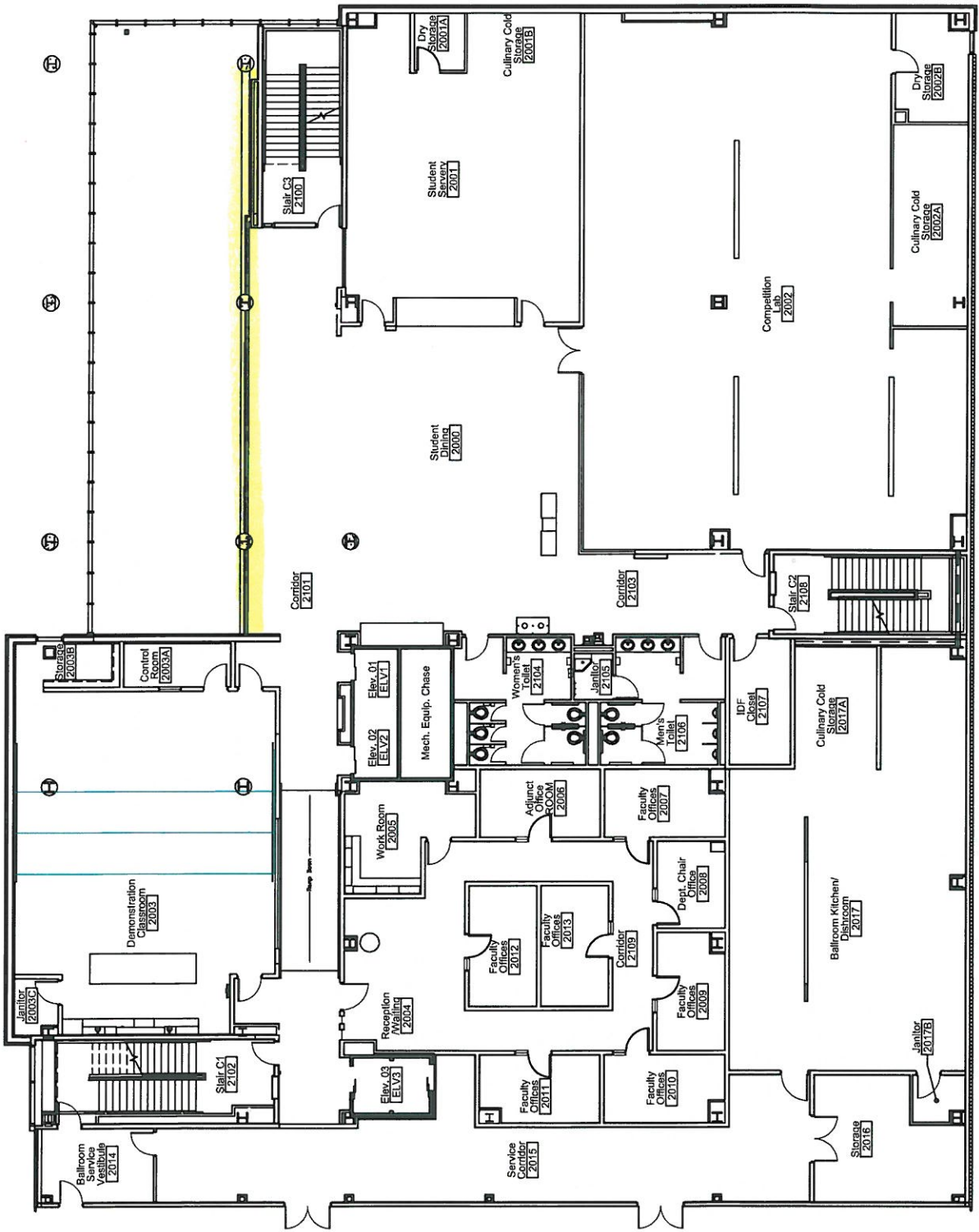
- a. All exterior windows
- b. All stairwell interior windows (3)
- c. Main lobby entrance and all interior windows
- d. 1st floor dining entrance doors/windows, bar doors/windows, east Chicago St. interior windows
- e. 2nd floor glass overlook wall
- f. Renaissance Center interior windows (first and second floors), main entrance exterior and interior vestibule
- g. Renaissance Center ballroom patio windows interior and exterior



JCTR BUILDING FIRST FLOOR PLAN

NTS



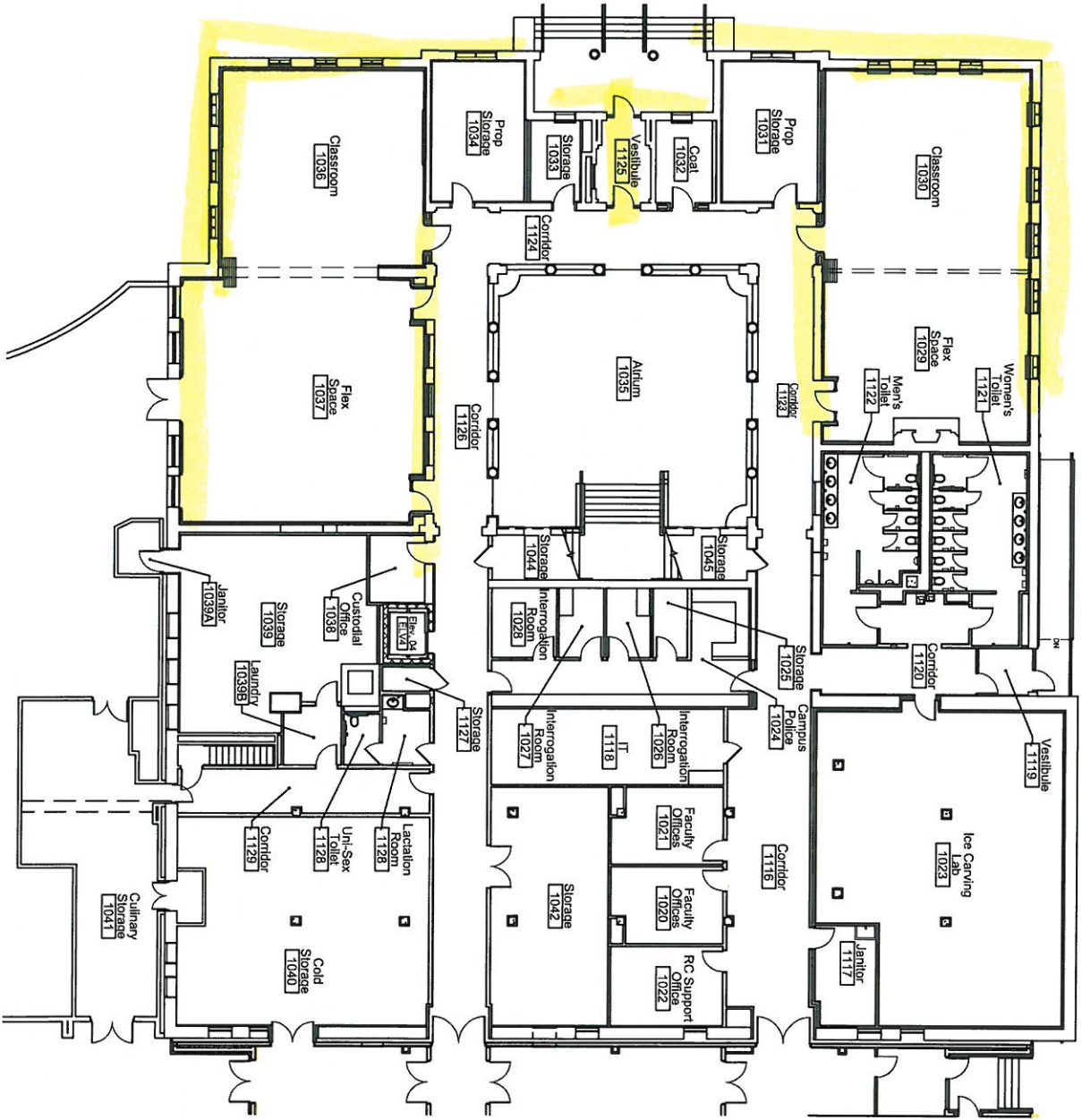


JCTR BUILDING SECOND FLOOR PLAN

NTS

RCEN BUILDING FIRST FLOOR PLAN

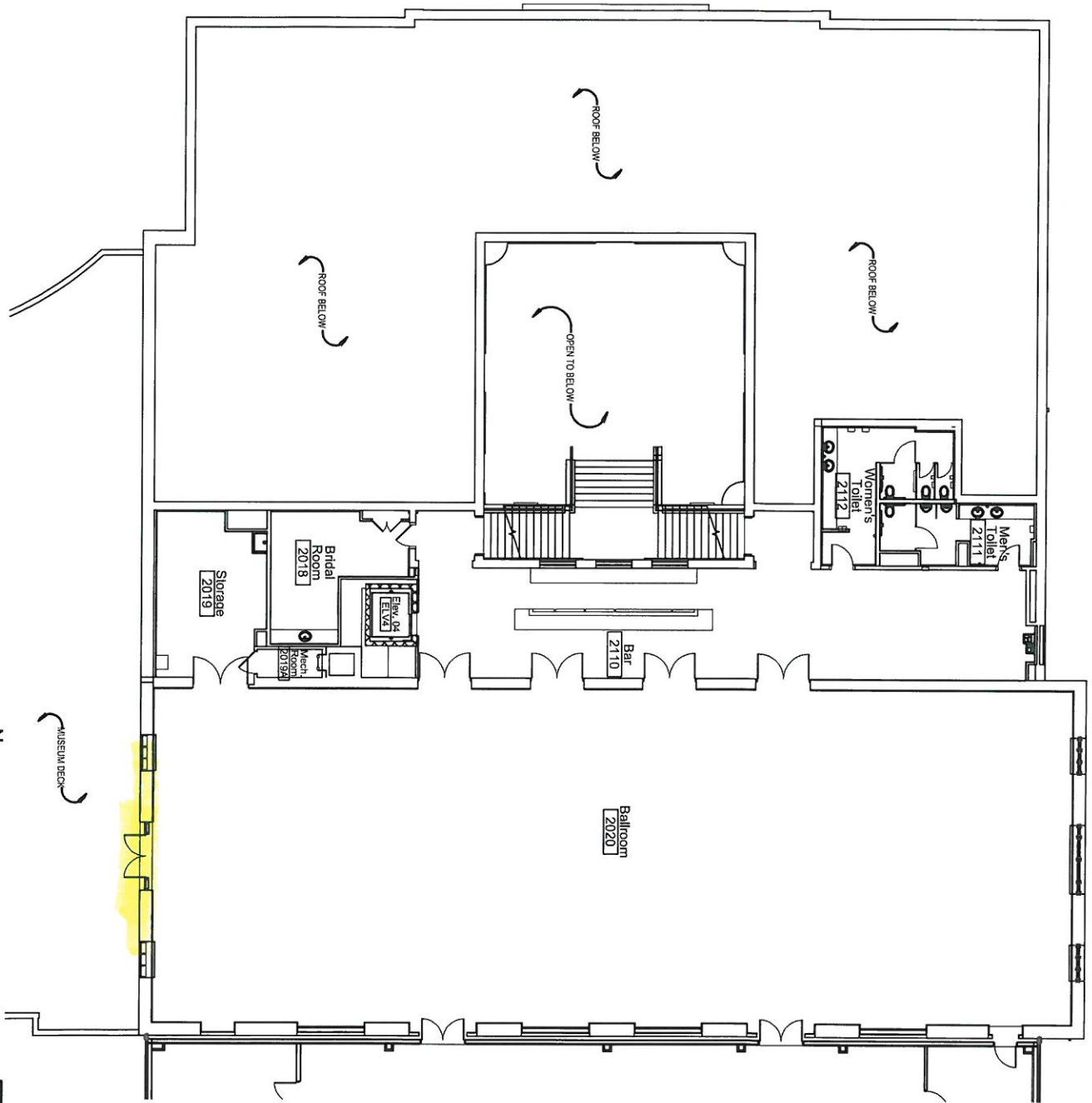
NTS



JOLIET
 JUNIOR COLLEGE
 1991

RCEN BUILDING SECOND FLOOR PLAN

NTS



JOLIET
 JUNIOR COLLEGE
 1901